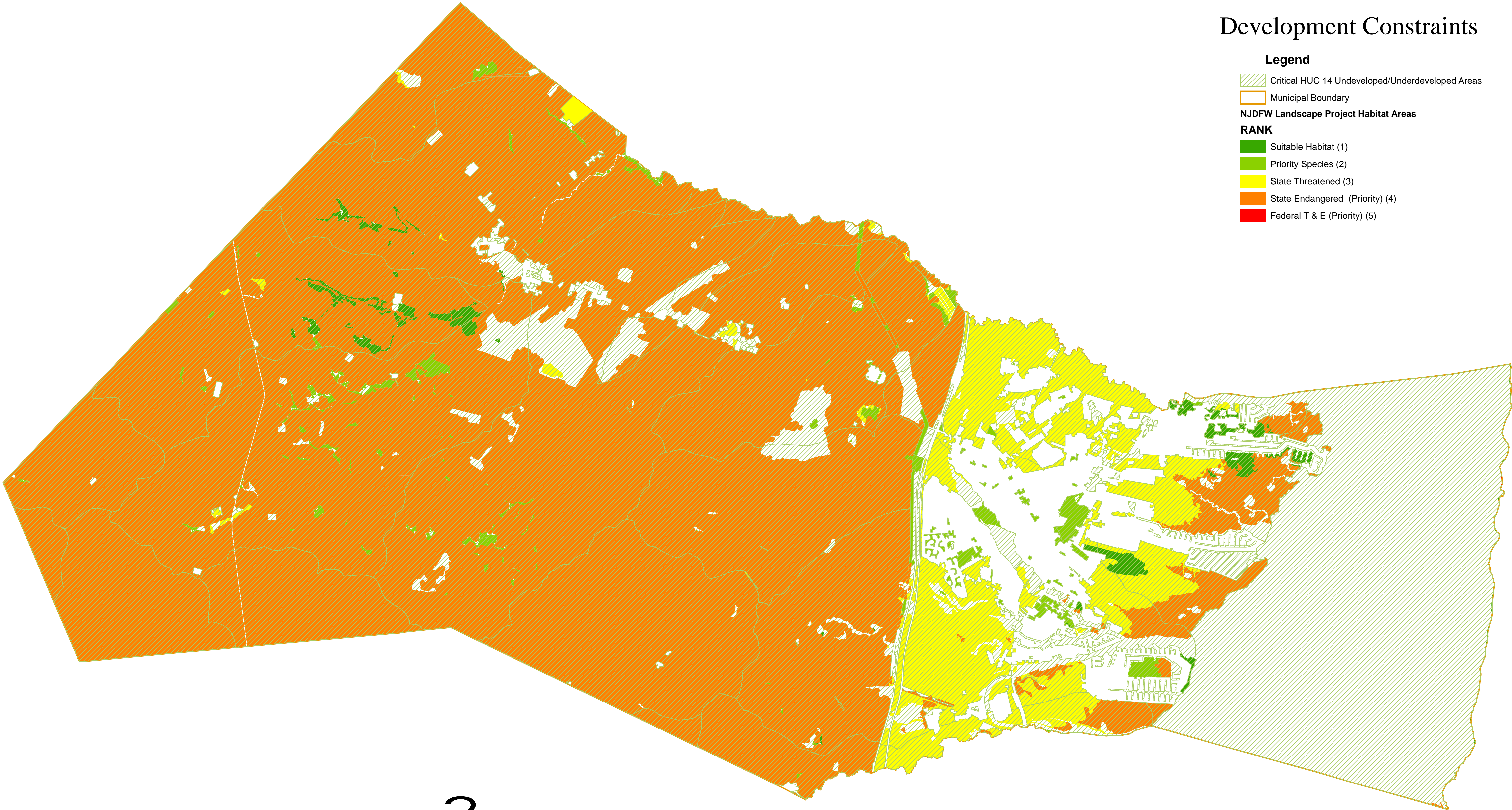


Lacey Township
Ocean County, NJ

Development Constraints

- Legend**
- Critical HUC 14 Undeveloped/Underdeveloped Areas
 - Municipal Boundary
 - NJDFW Landscape Project Habitat Areas**
 - RANK**
 - Suitable Habitat (1)
 - Priority Species (2)
 - State Threatened (3)
 - State Endangered (Priority) (4)
 - Federal T & E (Priority) (5)



RV
Remington, Vernick & Vena Engineers
9 Allen St.
Toms River, NJ 08753
(732) 286-9220, Fax: (732) 505-8416
Web Site Address: www.rve.com

Source of Data:
NJDEP GIS
Resource Website
<http://www.state.nj.us/dep/gis/>

0 0.375 0.75 1.5 2.25 3 Miles