


di cara  rubino
architects

30 galesi drive
wayne, nj 07470
tel 973.256.0202 □ fax 973.256.0227

MEMBERS OF THE AMERICAN INSTITUTE OF ARCHITECTS

GERMANO RUBINO, ALA	NU	I	N	08084
JOSEPH DI CARA, ALA	NU	I	N	08265

\bar{X}	\bar{X}
Board President of Schools, XX	
Superintendent of Schools, XX	

2005 LONG RANGE FACILITIES PLAN:
MILL POND
ELEM. SCHOOL

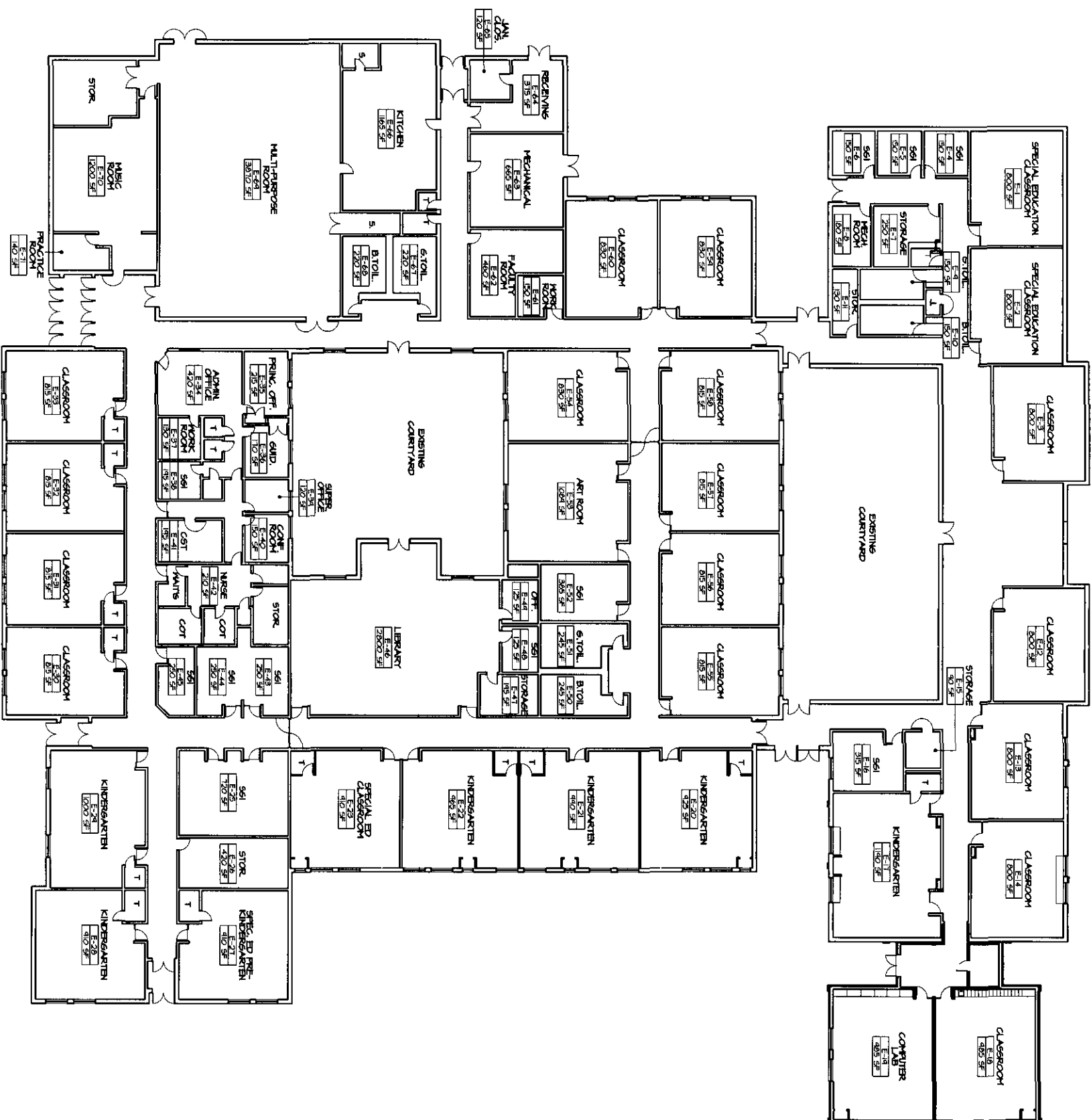
210 WESTERN BLVD.
LANOKA HARBOR, NJ 08734
LACEY TWP. SCHOOL DISTRICT

PLAIN

SCALE AS NOTED

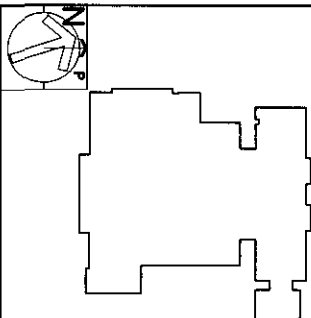
[illegible]

PROJECT NO. 1505
SHEET NO. A2.1



FLOOR PLAN SCALE NTS

1



di cara rubino
architects
30 galesi drive
wayne, nj 07470
(973) 256 0202 | fax 973 256 0227

MEMBERS OF THE AMERICAN INSTITUTE OF ARCHITECTS

GERMANO RUBINO, AIA NJ # A 08104
JOSEPH DI CARA, AIA NJ # A 08285
WE WOULD LIKE TO THANK JAMES SHARP AND STEVEN DE ARMENTIS

X Board President of Schools, XX

X Superintendent of Schools, XX

2005 LONG RANGE FACILITIES PLAN:

CEDAR CREEK
ELEM. SCHOOL

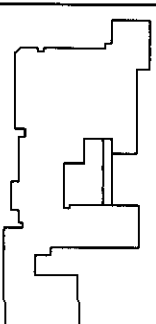
220 WESTERN BLVD.
LANOKA HARBOR, NJ 08734
LANERY TWP. SCHOOL DISTRICT

FLOOR PLAN

SCALE: NTS

DATE:	DRN	CHK
2-10-05	MS	MS
REV	4-12-05	MS
		MS
		MS
		MS
		MS
		MS
		MS
		MS
		MS

PROJECT NO. 1505
SHEET NO. A2.1



architects

wayne, nj 07470

tel: 973.256.0202 □ fax 973.256.0227

MEMBERS OF THE AMERICAN INSTITUTE OF ARCHITECTS

GERMANO RUBINO, ALA	NJ	1	MI	0806
JOSEPH DI CARA, ALA	NJ	1	MI	0826

JOSEPH DI CARA, ALA NJ # M 0826

NOT VALID FOR BUILDING UNITS SIGNED AND SEALED BY ARCHITECT

X
Board President of Schools, XX

X
Superintendent of Schools, XX

2006 LONG RANGE FACILITIES PLAN
 FORKED RIVER
 ELEM. SCHOOL

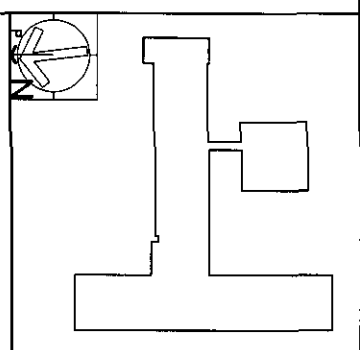
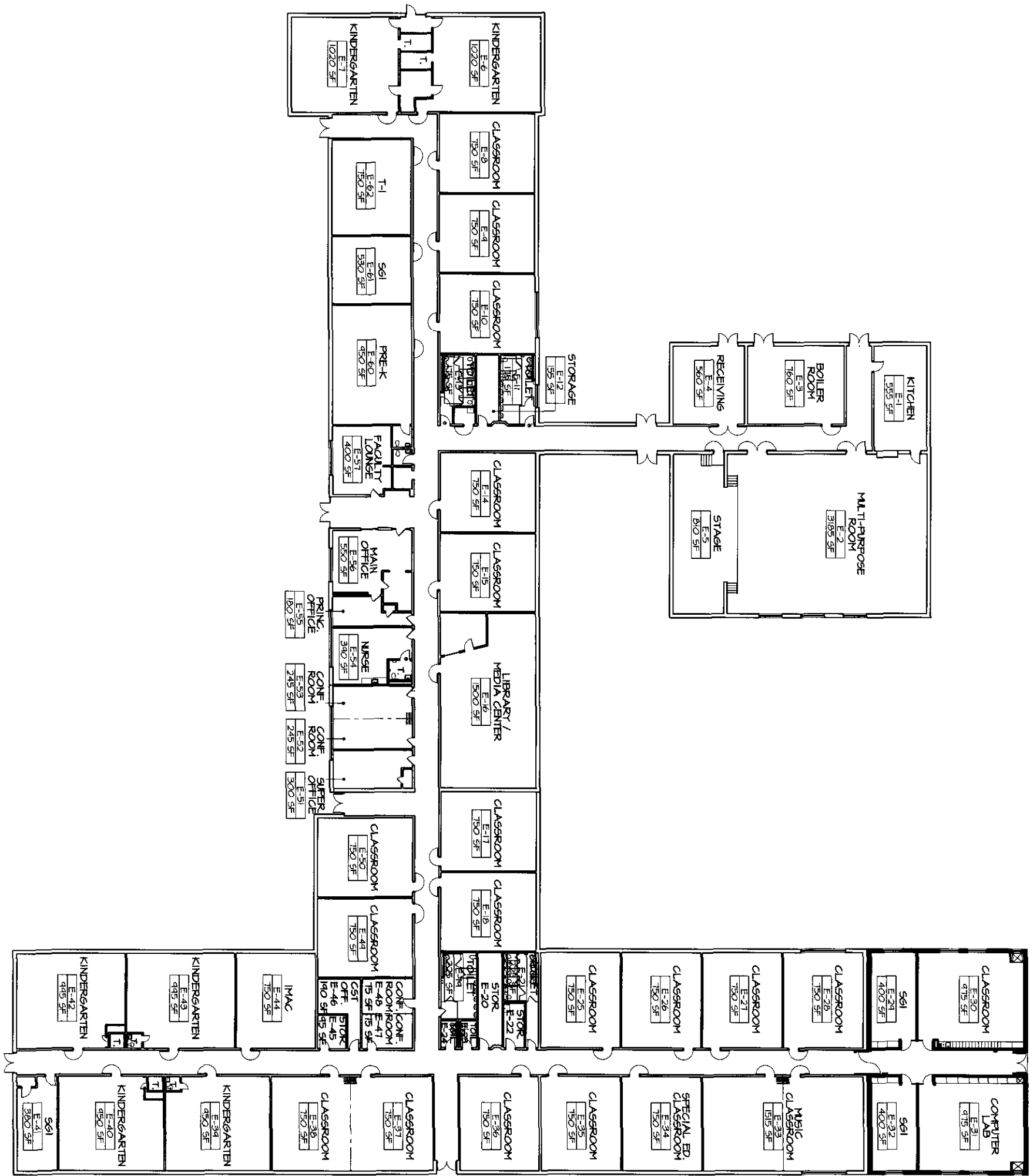
110 LACEY ROAD
FORKED RIVER, NJ 08731
LACEY TWP. SCHOOL DISTRICT

PLAN

SCALE AS NOTED

[illegible]

2000



di cara rubino
architects

30 galesi drive
Wayne, NJ 07470
tel 973.256.0202 fax 973.256.0227

GERMANO RUBINO, AIA
JOSEPH D. CARL, AIA
N.J. A 00854
N.J. A 02853
NOT VALID FOR EXISTING EXISTING SCHOOLS AND SCHOOLS IN PROGRESS

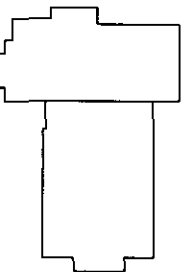
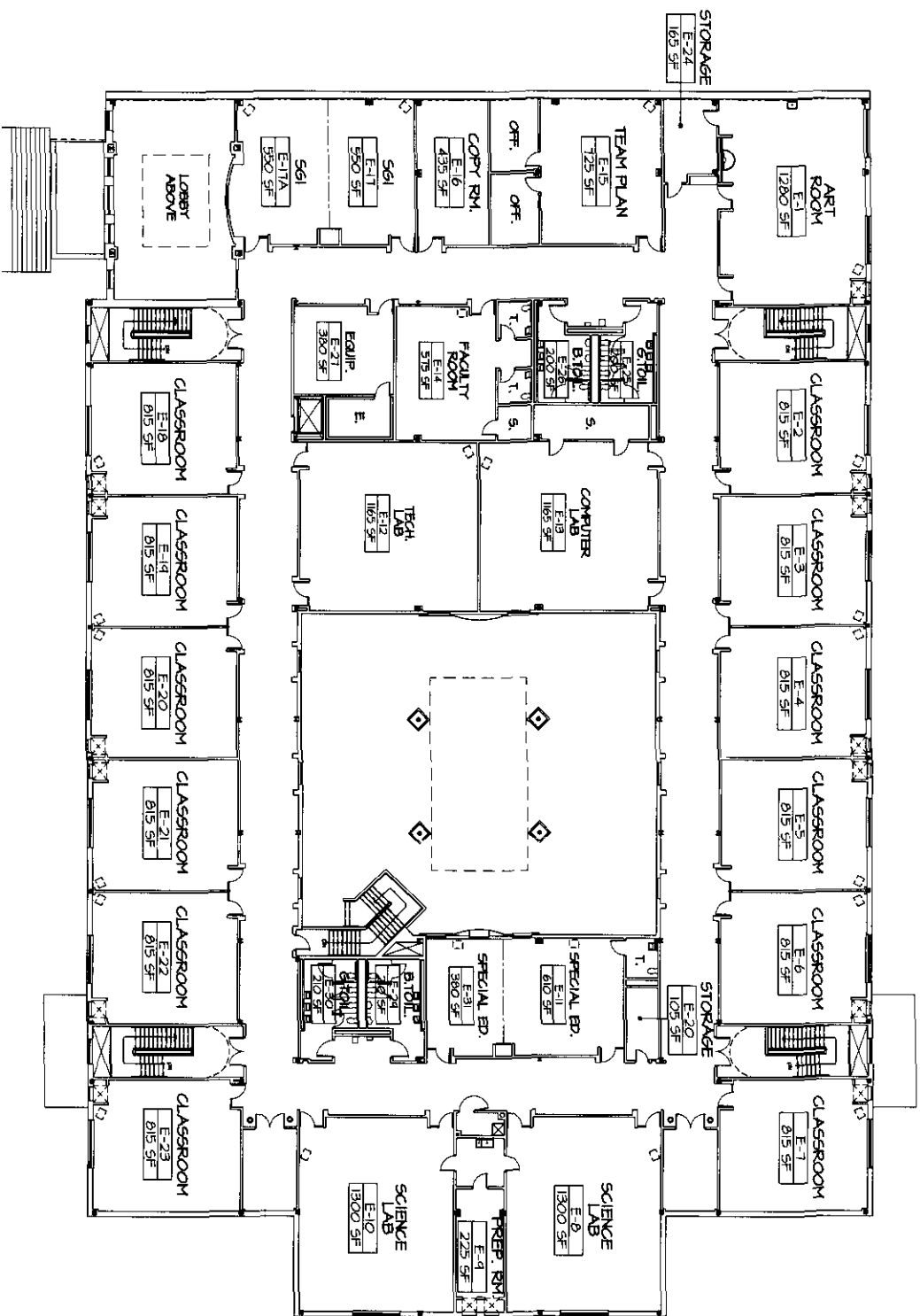
X
Board President of Schools, XX
X
Superintendent of Schools, XX

2006 LONG RANGE FACILITIES PLAN:
LANOKA HARBOR
ELEM. SCHOOL
281 MANCHESTER AVE.
LANOKA HARBOR, NJ 08734
LANCET TWP. SCHOOL DISTRICT

PLAN

SCALE AS NOTED

DATE:	DRN	CHK
6-10-05	MS	LRP
REV	4-12-05	MS
		LRP



di cara rubino
architects

30 galesi drive
Wayne, NJ 07470
tel 973.256.0202 fax 973.256.0227

MEMBERS OF THE AMERICAN INSTITUTE OF ARCHITECTS

GERMANO RUBINO, AIA NJ # AI 08384
JOSEPH DI CARA, AIA NJ # AI 08265
WE HAVE BEEN DESIGNING BETTER SCHOOLS AND EXISTING BY DESIGN!

X Board President of Schools, KX
X Superintendent of Schools, XX

2006 LONG RANGE FACILITIES PLAN:

LACEY MIDDLE SCHOOL

660 DENTON AVENUE
PORKED RIVER, NJ 08731
LACEY TWP. SCHOOL DISTRICT

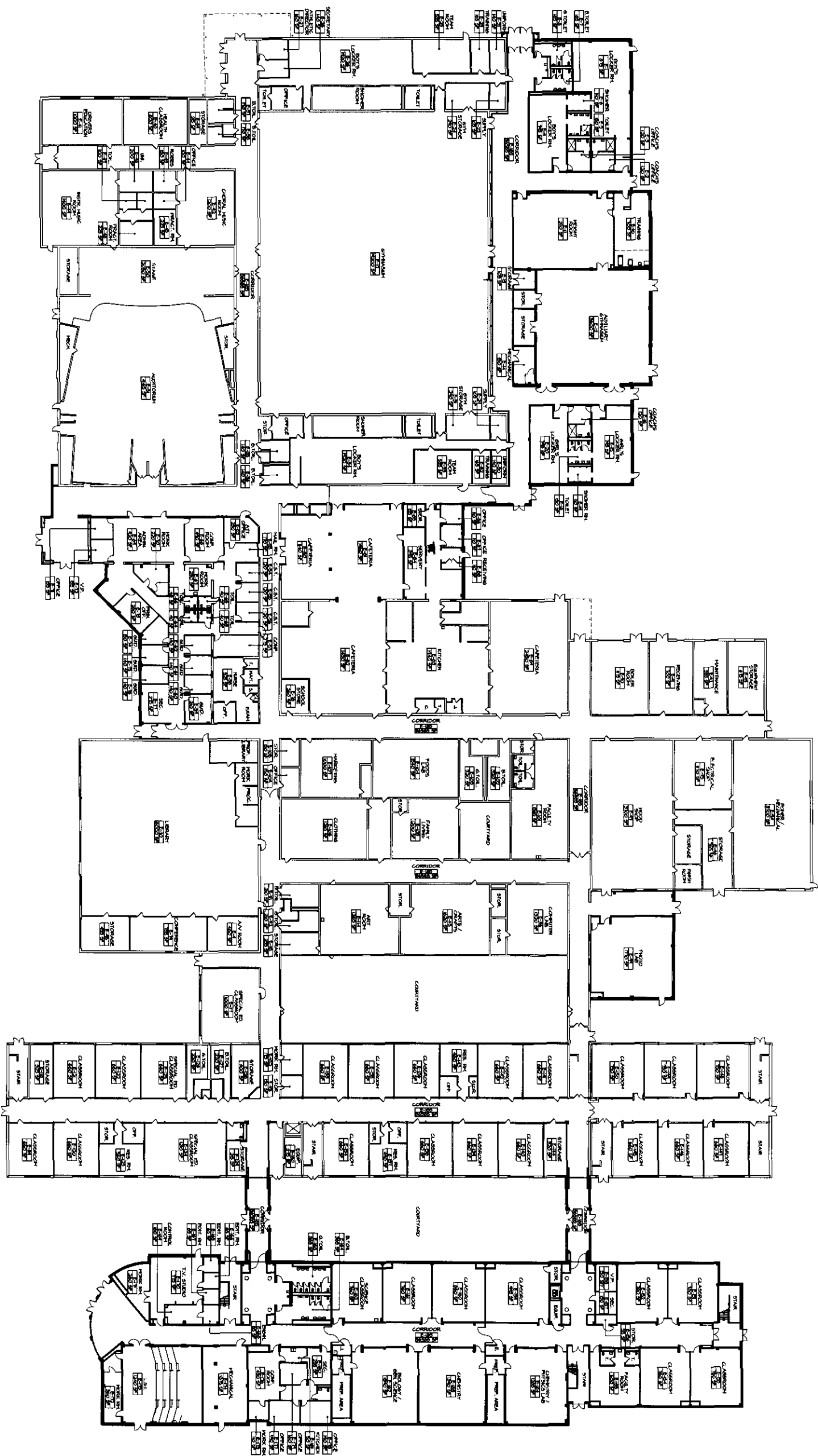
SECOND FLOOR PLAN

SCALE AS NOTED

DATE	DRN	CHK
6-10-05	MS	MS
REV	4-12-05	MS MS LRP

SECOND FLOOR PLAN SCALE: NTS

PROJECT NO. 1505 SHEET NO. A2.2



LOWER LEVEL PLAN 1



di cara rubino
architects

30 galesi drive
wayne, nj 07470
tel 973.256.0202 fax 973.256.0227

MEMBERS OF THE AMERICAN INSTITUTE OF ARCHITECTS

CERIMANO RUBINO, AIA NJ # A 08084
JOSEPH DI CARA, AIA NJ # A 08285
WE HOLD THE NATION'S INTERESTS SERVED AND DEFEND BY ARCHITECT

X Board President of Schools, XX

X Superintendent of Schools, XX

2005 LONG RANGE FACILITIES PLAN:

LACEY HIGH SCHOOL

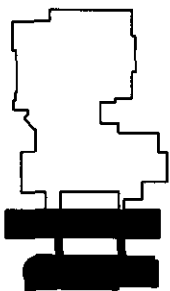
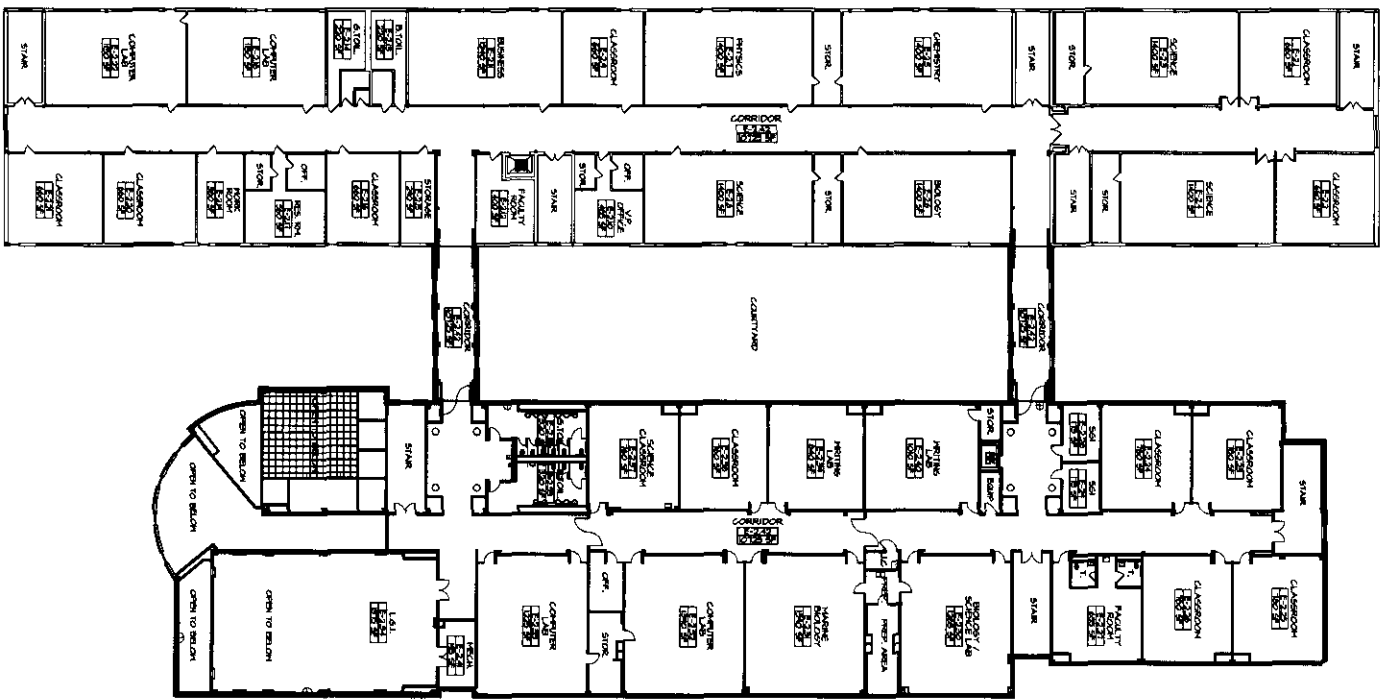
P.O. BOX 206 HAINES ST.
LANOKA HARBOR, NJ 08784
LACEY TWP. SCHOOL DISTRICT

LOWER LEVEL PLAN

SCALE AS NOTED

DATE:	ISSN	CHK
10-03-05	146	NS LTRP
REV.		

PROJECT NO. 1505
SHEET NO. A2.1



di cara  rubino
architects

30 galesi drive
WAYNE, NJ 07470
tel 973.256.0202 fax 973.256.0227

MEMBER OF THE AMERICAN INSTITUTE OF ARCHITECTS

GERMANO RUBINO, AIA NJ # NJ 08864
JOSEPH D. CARO, AIA NJ # NJ 08765
AND HAVE THE FOLLOWING SIGNED AND SEALED BY ARCHITECT

X
Board President of Schools, XX

X
Superintendent of Schools, XX

2005 LONG RANGE FACILITIES PLAN:
LACEY HIGH
SCHOOL

P.O. BOX 208, HANES ST.
LANOKA HARBOR, NJ 08794
LACEY TWP. SCHOOL DISTRICT

UPPER LEVEL PLAN

SCALE AS NOTED

DATE	BY	CHK
REV.		

UPPER LEVEL PLAN

SCALE: NTS

1

PROJECT NO. 1505
SHEET NO. A2.2