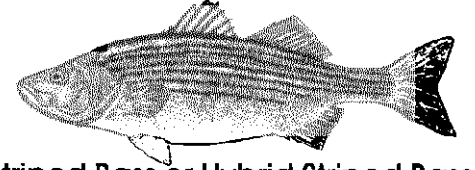
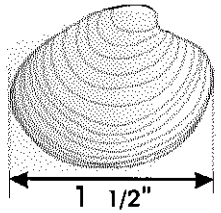


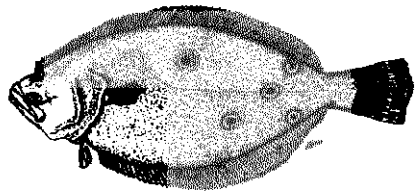
ATTENTION ANGLERS

2003 NJ Minimum Size, Possession Limits & Seasons

Fish are measured from tip of snout to tip of tail (*except Black Sea Bass*).
 Cleaning or filleting of fish with a minimum size limit while at sea is prohibited.



Del. River & tribs. (Rt. 1 Bridge): Trenton, to Salem River & tribs
 Open Mar. 1 - Mar. 31 & June 1 - Dec. 31
 Atlantic Ocean (0-3 miles from shore), no closed season
 (Greater than 3 miles from shore), closed
 All other marine waters, open Mar. 1 - Dec. 31

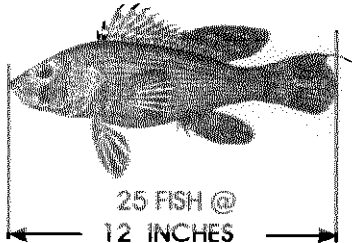
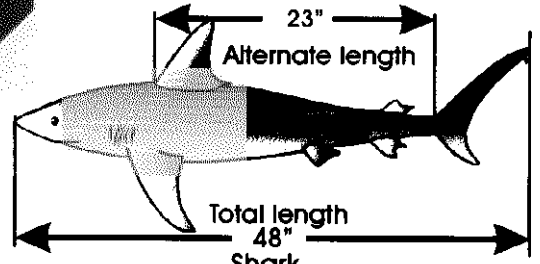
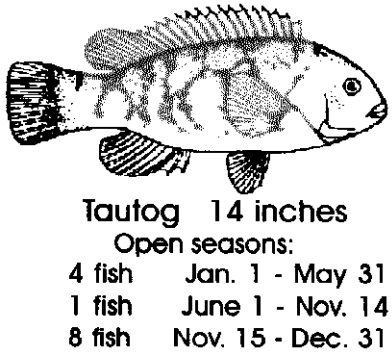
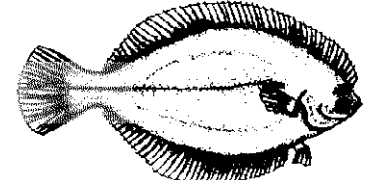


License required
NO SUNDAY HARVEST

PROHIBITED

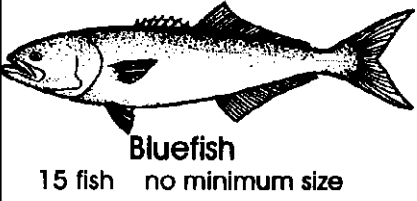
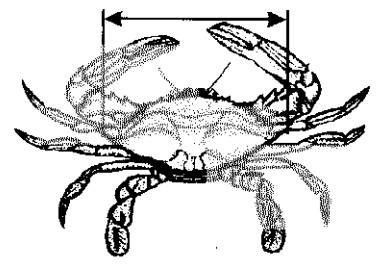
It is illegal to take, possess or land any of the following species:

**BIGEYE SAND TIGER SHARK
 SHORTRNOSE STURGEON
 ATLANTIC STURGEON
 SAND TIGER SHARK
 BASKING SHARK
 WHALE SHARK
 WHITE SHARK**



OTHER SPECIES	POSSESSION LIMIT	TOTAL LENGTH
AMERICAN EEL	50	6"
BLACK DRUM	3	16"
COBIA	2	37"
COD	NO LIMIT	21"
HADDOCK	NO LIMIT	21"
KING MACKEREL	3	23"
POLLOCK	NO LIMIT	19"
RED DRUM	1	18"- 27"
SCUP (PORGY)	50	10" (July 1 - Dec. 31)
SHAD	6	NO LIMIT
SPANISH MACKEREL	10	14"
LOBSTER	6	3 5/16" (as of 8/19/02) 3 11/32" (as of 7/1/03)

(CARAPACE LENGTH)



New Jersey Department of Environmental Protection
 Division of Fish and Wildlife

