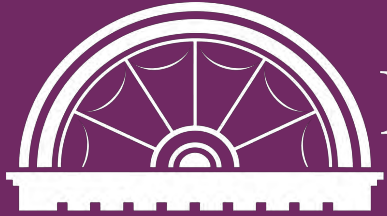


2015 ANNUAL REPORT



NEW JERSEY
HISTORIC
TRUST



The New Jersey Historic Trust was created by law in 1967 to preserve New Jersey's historic resources across the state. The Mission of the Trust is to advance historic preservation in New Jersey for the benefit of future generations through education, stewardship and financial investment programs that save our heritage and strengthen our communities.

© 2016 New Jersey Historic Trust

New Jersey Historic Trust
PO Box 457
Trenton, NJ 08625

On the cover

Church of Our Saviour (currently the Camden Shipyard & Maritime Museum)
(read more on p. 16)

Right Page

Isaiah & Mary Sheppard Farm Site
(read more about the Sheppard Farm easement on p. 30)



CONTENTS

4	Message from the DCA
5	Message from the Trust
6	Board of Trustees & Staff
10	Year in Review <ul style="list-style-type: none">• Award-winning Projects• Outreach and Events• NJ History & Historic Preservation Conference• New Initiatives
15	Grant Programs: Completed Projects <ul style="list-style-type: none">• Garden State Historic Preservation Trust Fund• Sandy Disaster Relief Grants for Historic Properties
24	Grant Programs: Awarded Projects <ul style="list-style-type: none">• 1772 Foundation• "Discover NJ History" License Plate Fund for Heritage Tourism
30	Easement Program Highlight
32	About the New Jersey Historic Trust
33	Index

MESSAGE FROM THE DEPARTMENT OF COMMUNITY AFFAIRS

Dear Friends:

I am pleased to provide you with the 2015 New Jersey Historic Trust Annual Report. As the state's leading voice for historic preservation, the Trust has consistently advanced historic guardianship in New Jersey for the benefit of future generations through education, stewardship and financial investment programs that protect our traditions and strengthen our communities.

This report underscores the many outstanding historic preservation planning projects that received funding through the Garden State Historic Preservation Trust Fund. Since 1990, more than \$137 million in matching grants have been awarded for 734 capital preservation and planning projects throughout the state. In 2015, more than \$2.7 million was reimbursed for construction and planning activities, resulting in the successful completion of 24 capital and planning projects.

Of particular note in this year's report is the development of a new heritage tourism website, specifically focused on one of six interpretative themes identified in the Heritage Tourism Master Plan. This project derives from a recent study by Tourism Economics that found heritage tourism comprised 8 percent of the state's total revenue generated through tourism. The nearly 11 million visits created \$2.6 billion in GDP and a total of \$335M in state and local taxes. The Trust's effort will undoubtedly aid campaigns that promote the state's history, heritage tourism and tourism products.

The Trust also continued its remarkable contributions to Superstorm Sandy recovery by promoting Preservation New Jersey's two resiliency workshops on coastal and urban flooding, which were geared toward historic properties affected during Superstorm Sandy.

The conscientious efforts of the Trust members to preserve New Jersey's past for generations to come are greatly appreciated.

Sincerely,



Charles A. Richman
Commissioner
Department of Community Affairs



MESSAGE FROM THE TRUST

Dear Friend to Preservation:

The 2015 year for the New Jersey Historic Trust was a year of partnerships, for both funding and education programs.

The Trust's five-year relationship with the 1772 Foundation has provided much needed relief for small organizations that are in need of funding for clearly defined capital stewardship projects. Matching grants up to \$15,000 support the repair and restoration of roofs, windows, masonry, foundations and porches – all elements that are vitally important in keeping a historic building safe, dry and functional. This year, we were pleased to recommend 29 grants for \$290,000. Read more about these grants on page 24.

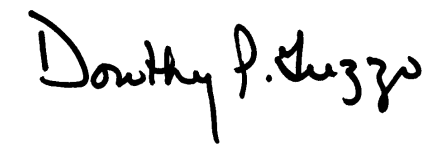
Our partnerships for presenting educational programs has been highly beneficial, keeping the Historic Trust in the forefront of stewardship issues, and have expanded our audience and stakeholder base. The Best Practices workshop series for the staff and board members of history organizations, Kean University's workshop series for heritage site managers, and the NJ History and Historic Preservation Conference are just three examples of the Trust's efforts to share valuable information about historic preservation. Read more about educational and outreach efforts on page 11.

Thank you for your support and interest in the Trust's activities and accomplishments. Together, we will move forward toward a bright future for our past.

Regards,



Meme Omogbai
Chair
New Jersey Historic Trust Board of Trustees



Dorothy P. Guzzo
Executive Director
New Jersey Historic Trust



BOARD OF TRUSTEES & STAFF



CITIZEN MEMBERS

- | | |
|---|---|
| Meme Omogbai, <i>Chair, Somerset County</i> | Kenneth Alan Miller, <i>Treasurer, Morris County</i> |
| Carolann Clynes, <i>Union County</i> | Katherine Ng, <i>Burlington County</i> |
| Janet Foster, <i>Vice Chair, Morris County</i> | Chris Perks, P.E., <i>Immediate Past Chair, Camden County</i> |
| Deborah Marquis Kelly, <i>Burlington County</i> | Patricia Anne Salvatore, <i>Cape May County</i> |
| Peter Lindsay, P.E., <i>Sussex County</i> | |

EX-OFFICIO MEMBERS

- Bob Martin**, *Commissioner and State Historic Preservation Officer*, Department of Environmental Protection
 Represented by Daniel Saunders, Administrator and Deputy Historic Preservation Officer
- Charles A. Richman**, *Commissioner*, Department of Community Affairs
 Represented by Sean Thompson, Director, Office of Local Government Services
- Ford M. Scudder**, *Acting State Treasurer*
 Represented by Robert Tighue (Secretary), Division of Property Management and Construction

TRUSTEE DEBORAH KELLY RECEIVES THE OLIPHANT AWARD

In March, The Old Barracks honored Deborah Marquis Kelly with its Beulah Oliphant award, in recognition of Ms. Kelly's long-time commitment to and leadership in the historic preservation of New Jersey's built environment. In addition to her service to the New Jersey Historic Trust, Ms. Kelly is principal of the historic preservation consulting firm Preservation Partners, is the co-author of the *New Jersey Women's Heritage Trail*, and is a former Executive Director and board member of Preservation New Jersey, where she still volunteers. The award is named for Beulah Oliphant, who led the effort to preserve The Old Barracks, and is presented to New Jersey women who make outstanding contributions to history and historic preservation, education, or scholarship.



SPECIAL THANKS TO RETIRING TRUSTEE JOHN D. S. HATCH, AIA

The Board of Trustees of the New Jersey Historic Trust expresses its appreciation to John Hatch for his thirteen years of service and leadership representing the Historic Trust and the preservation community in New Jersey. Mr. Hatch advised and chaired the Easements Committee for many years and contributed valuable insight to the development of the Trust's strategic plan. A partner at the Trenton-based architectural firm Clarke Caton Hintz, he frequently provided testimony at important legislative hearings and remains a champion for the capital city, where he works to enhance the quality of life for its residents.

STAFF

- Dorothy P. Guzzo, *Executive Director*
- Judith Adams, AICP, *Senior Historic Preservation Specialist*
- Glenn Ceponis, *Principal Historic Preservation Specialist*
- Lauren Giannullo, AICP, *Historic Preservation Specialist*
- Catherine Goulet, *Principal Historic Preservation Specialist*
- Paula Lassiter, *Clerk/Typist*
- Michele Racioppi, *Program Assistant*
- Sandy Disaster Relief Grants for Historic Properties
- Jennifer Stark, AIA, *Program Manager*

BOARD BIOS

CAROLANN CLYNES, UNION COUNTY

A professional real estate broker, former branch office manager, Vice President of Corporate Business Development and appraiser for 30 years, Ms. Clynes has been active in historic preservation since 1990. She chaired the Summit Historic Preservation Commission in the 1990s when the community identified its 12 historic districts in preparation for the 1994 master plan. She spearheaded the movement to save Summit's Richardson-Romanesque town hall built in 1892 that had been slated for sale or demolition. Ms. Clynes has been a member of Who's Who of American Women since 2002. She serves on the Grants & Loans Committee and was Committee Chair in 2004-2005. She served as Vice Chair for two years prior to becoming Trust Chair in 2006.

JANET W. FOSTER, MORRIS COUNTY

An architectural historian and historic preservation consultant, Janet Foster is a proponent of New Jersey and its vernacular architecture. She teaches and writes on the topic, and is an adjunct faculty member in the Columbia University Historic Preservation Program. She serves on the Morris County Open Space and Historic Preservation Trust Fund, the Madison Borough Historic Preservation Commission, and on the Trustees of the Hartley Dodge Memorial. Ms. Foster was elected Vice Chair in 2014, and also serves on the Grants and Loans, Education and Outreach, and Legislation and Policy Committees.

DEBORAH MARQUIS KELLY, BURLINGTON COUNTY

Ms. Kelly is a former executive director of Preservation New Jersey and since 1996 has been an independent historic preservation consultant through her company, Preservation Partners. She is the co-author of the New Jersey Women's Heritage Trail, and is the current secretary of the Chesterfield Township Historical Society. She is the past member and chair of the NJ Historic Sites Council and served on the Chesterfield

Township Planning Board for 20 years. Ms. Kelly chaired the Trust from 2009-2011, continues to chair the Grants and Loans Committee and serves on the Legislation and Policy and Strategic Planning Committees.

PETER LINDSAY, PE, SUSSEX COUNTY

Mr. Lindsay has more than thirty years of professional experience in engineering and holds a Master's degree in Mechanical Engineering from New Jersey Institute of Technology. Presently employed in private industry, Mr. Lindsay is a life-long New Jersey resident. His former residence in Hardyston Township was one of the earliest homes built by the Joseph Sharpe family in 1809. Mr. Lindsay participated in the structural stabilization project of the Hamburg Presbyterian Church's 1868 Sanctuary. His other interests include antique automobiles, history, and genealogy. He is a member of the Sons of Union Veterans of the Civil War and several classic car clubs in addition to professional organizations. Mr. Lindsay serves on the Acquisitions and Easements Committee.

KENNETH A. MILLER, MORRIS COUNTY

Mr. Miller is retired from the financial services industry, and serves in a number of volunteer positions, including treasurer of the Joint Free Public Library of Morristown and Morris Township Foundation. He has been involved in preservation as a Commissioner and Chair of Morristown's Historic Preservation Commission, as well as restoring his private residence, a National Historic Landmark. He also served Morristown as a Commissioner on the Vail Mansion Redevelopment Agency. Mr. Miller was elected Treasurer in 2013, and chairs the Acquisitions and Easements and Strategic Planning Committees.

KATHERINE NG, LEED AP, BURLINGTON COUNTY

Ms. Ng is the Vice President of Development for Wu & Associates, a general construction firm that has

received widespread recognition for its restoration and preservation work from notable sources including the National Trust for Historic Preservation, state agencies, and local preservation organizations. Holding a Masters in Psychology from the University of California, Los Angeles, Ms. Ng's focus centers on the integration of culture into the fabric of sustainable community growth. She is an active proponent of historic preservation, having worked on post-September 11th restoration of historic Chinatown in lower Manhattan; having served as a past Advisory Board Member for the Pennhurst Memorial and Preservation Alliance to develop an international site of conscience; and serving as an invited speaker for professional and collegiate preservation audiences. Ms. Ng was appointed to the board in 2014. She chairs the Legislation and Policy Committee and serves on the Strategic Planning Committee.

MEME OMOGBAI, MBA, CPA, CGMA, SOMERSET COUNTY

Named one of 25 Influential Black Women in Business by The Network Journal in 2010, Ms. Omogbai has been a leader in the nonprofit, corporate, museum and government sectors. As the first American of African descent named Board Chair of the American Alliance of Museums (AAM), Ms. Omogbai co-authored its ground-breaking strategic plan "The Spark" and led the initiative to rebrand the AAM as a global alliance. As Co-Director, Interim CEO, COO, CFO and Trustee, she led a major transformation in operating performance at the 105-year-old Newark Museum. Her program of financial accountability and innovation propelled the organization to the pinnacle of achievement with four consecutive years of 4-star ratings for superior management. Ms. Omogbai's background includes serving as the first minority (and youngest) Deputy Assistant Chancellor of New Jersey's Department of Higher Education. Her multifaceted earlier experience includes expertise in finance and management with the New Jersey Casino Control Commission, Arthur Young

& Co. and Barbizon Corporation. She currently serves as a Director on the boards of the AAM, The Advisory Board of Montclair State University's College of Science & Mathematics, and St. Vincent Academy. She has also been appointed by the Emir of Borgu Kingdom to the Think Tank on the cultural infrastructure of the Emirate and establishment of its monuments and history. She was elected Trust Chair in 2014, previously serving as Vice Chair.

CHRIS PERKS, PE, CAMDEN COUNTY

Mr. Perks is a professional engineer who resides in Camden City. He was elected president of the Camden County Historical Society in 2013, after serving as treasurer for several years. Mr. Perks is the most recent past Chair of the Trustees, serving from 2011-12, and held the position of Treasurer in 2004 and 2005. He also serves on the Acquisitions and Easements Committee.

PATRICIA ANNE SALVATORE, CAPE MAY COUNTY

Ms. Salvatore founded, developed, and preserved/restored two history sites as nonprofit museums: Historic Cold Spring Village (where she currently serves as executive director) and Naval Air Station Wildwood Aviation Museum. She is a leader locally and regionally in promoting heritage tourism, having served on the board of the South Jersey Cultural Alliance since 1994 and the Cape May County Chamber of Commerce for nine years. Ms. Salvatore's contributions to historic preservation, interpretation and heritage tourism have been recognized by the NJ State Federation of Women's Clubs and Douglass College of Rutgers University, the American Association for State & Local History, the Advocates for New Jersey, the New Jersey Governor's Volunteer of the Year Award, the Smithsonian Magazine / Traveler's Conservation Foundation, the NJ Governor's Conference, and by a joint resolution from the NJ Senate and Assembly citing contributions to tourism/historic preservation in 1998. Ms. Salvatore chairs the Education and Outreach Committee.

Each year in May, during National Historic Preservation Month, the NJ Historic Preservation Office recognizes a number of historic preservation projects, organizations, and innovations at a preservation awards ceremony. Two of the projects recognized this year received funding through the New Jersey Historic Trust:

NEW YORK-NEW JERSEY TRAIL CONFERENCE HEADQUARTERS AT THE DARLINGTON SCHOOLHOUSE, MAHWAH, BERGEN COUNTY

The 1891 Darlington Schoolhouse hosted classes until the 1940s. Purchased in 2007 to become the Trail Conference's headquarters, this Arts and Crafts Shingle-style landmark was restored and expanded for office space, an education facility, and visitors center. The project was supported by two planning grants and a \$750,000 capital preservation grant from the Historic Trust.



REHABILITATION OF THE SCREEN HOUSE AT THE RED MILL MUSEUM VILLAGE, CLINTON, HUNTERDON COUNTY

The Screen House served as a crushed stone sorter during the complex's quarry operation period which began in 1848. Closed for many years due to deterioration and safety concerns, the building recently reopened with a new stair, observation deck and rehabilitated mechanical equipment that operates an interactive exhibit. The project was funded in part by a grant from the New Jersey Cultural Trust, administered by the New Jersey Historic Trust.



Throughout the year, the Historic Trust staff helps to plan and support educational workshops and conferences that reach out to the history and historic preservation audiences:

- The Historic Trust continued its support for the planning and implementation of the Best Practices workshop series for history nonprofits in cooperation with the NJ Historical Commission. In the spring, "Serving Audiences in New Ways" presented new ways to engage audiences. In the fall, "Building a Better Board" addressed board responsibilities and retention, and was held in three locations in collaboration with the State Library.
- The Historic Trust helped to publicize Kean University's educational workshops on museum stewardship, vernacular architecture and Historic Preservation Commission (HPC) training. Historic Trust Vice Chair Janet Foster was a featured speaker at the vernacular architecture event, and Executive Director Dorothy Guzzo helped lead the HPC training.
- Trust staff participated in exhibit areas at the NJ History Fair, Monmouth County's Archives and History Day, at the Historical Commission's fall event.



- Trust staff helped promote Preservation New Jersey's two resiliency workshops for historic properties affected by Superstorm Sandy, covering both coastal and urban flooding.
- Trust staff made a presentation on its funding recommendations at The 1772 Foundation's July meeting in Newport, Rhode Island.

Trust Board Chair Meme Omogbai welcomed Trenton Mayor Eric Jackson to the unveiling of new interpretive signage for historic Cadwalader Park, funded in part by the NJ Historic Trust. (above)



Knowlton Township students explored the history of the Ramsaysburg Homestead after the exterior restoration was completed, thanks to capital grants from the NJ Historic Trust and Warren County. (left)

The 2015 conference introduced some new elements to the annual event, the most significant of which was offering value-added activities to the day before the full-day conference. Based in Southern New Jersey this year, event planners took advantage of local resources for its tour opportunities and opening night reception.

Senator Diane Allen and Samuel Leeds Allen were gracious hosts for the conference's opening night reception that took place at their historic riverside home, Towerview (below, left). In addition to enjoying the perfect weather and outdoor reception, guests were entertained by stories of international art theft and recovery from Robert Wittman, a former FBI agent and author (below, right).



Also on the first day, a tour of the Kensington neighborhood in Philadelphia showcased urban preservation and rehabilitation projects (below). The Historic Preservation Office staff hosted a half-day workshop designed for Cultural Resource Management professionals.



The annual conference could not take place without the generous and consistent support of the sponsors, including our highest level supporters: AIA New Jersey, HMR Architects, Investors Bank, RPM Development Group, Connolly & Hickey Historical Architects, and HMFA. **Thank you to all of the conference sponsors!**

SAVE THE DATE!

The 2016 conference is scheduled for June 8 and 9 at Seton Hall University. The June 8 date will offer a choice of workshops and an opening night reception at the Thomas Edison National Historic Park in West Orange.

The full-day conference on June 4 presented a choice of 17 educational sessions, such as "Restoration Lessons and Sustainable Preservation," "History and Historic Preservation Professional Career Exchange," "Fundraising Know-How for Everyone," and "Adapting New Jersey's Historic School Buildings."



A workshop on restoration and maintenance of historic wood windows was a popular afternoon selection, while two tours explored the Women's Heritage Trail and the revitalization of the nearby community of Collingswood.



Plenary speakers Ruth Abram (below) and Elizabeth Silkes both spoke about incorporating history within contemporary community, even when the subject matter is uncomfortable. Ms. Abram is the founder of the Lower East Side Tenement Museum and New Lebanon: A Living Museum of Contemporary Rural American Life. Ms. Silkes is the director of the International Coalition of Sites of Conscience, which includes New Jersey sites such as Ellis Island and the Jewish Museum of New Jersey.



YEAR IN REVIEW: NEW INITIATIVES

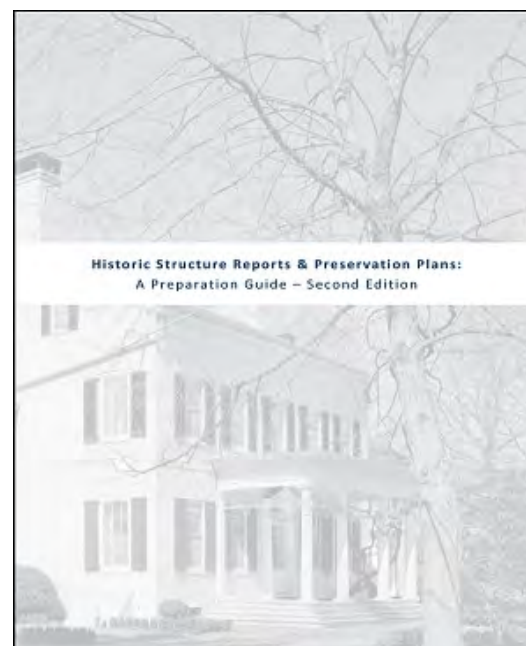
HISTORIC TRUST UNVEILS AN UPDATED GUIDE TO PREPARING HISTORIC STRUCTURE REPORTS AND PRESERVATION PLANS

In 1998 the NJ Historic Preservation Office published the [Historic Structure Reports & Preservation Plans: A Preparation Guide](#) to assist those working with historic structures and sites in understanding the basic documentation and analysis that is necessary in planning for future care and treatment of historic resources.

In 2015, the NJ Historic Trust, NJ Historic Preservation Office and the National Park Service collaborated to produce a second edition of this guide. Updated information includes new sections on Emergency Preparedness Planning and Vulnerability & Hazard Assessment.

The final document was prepared by Dominique M. Hawkins, AIA, LEED AP of the Preservation Design Partnership, LLC and incorporated many suggestions made during a public commentary period.

The final PDF is available on line at: <http://njht.org/resources/publications/HSR-PP-Guidelines-forweb.pdf>.



EDUCATION AND OUTREACH INITIATIVE WILL CREATE HERITAGE TOURISM WEBSITE

A recent study by Tourism Economics found that heritage tourism comprised 8 percent of the state's total revenue generated through tourism. The nearly 11 million visits created \$2.6 billion in GDP and a total of \$335 million in state and local taxes. Given this huge return on investment, the Trust initiated a new project to create a web presence for heritage tourism and to develop tourism products that will facilitate efforts to promote the State's history.

In 2015, the Trust contracted with a team to develop content for the new website, specifically focusing on one of the six interpretive themes identified in the 2010 [Heritage Tourism Master Plan](#).

The initial theme to be explored is "New Jersey in Conflict", which will bring together sites whose significance falls within the theme and explore ways to interpretively link these sites for the purposes of marketing and promotion. In conjunction with the theme development, a new website will be designed that will provide this information in an interesting, interactive and informative manner. Look for more information regarding this project in 2016!



Fire Control Tower No. 23, Lower Township, Cape May County

GRANT PROGRAMS: COMPLETED PROJECTS

GARDEN STATE HISTORIC PRESERVATION TRUST FUND

The New Jersey Historic Trust has awarded grants under the guidelines for the Garden State Historic Preservation Trust fund since the Garden State Preservation Trust was established by a voter-approved ballot initiative in 1998, continuing the work of the previous bond-funded grant program. Bond referendums in 2007 and 2009 provided additional funds. Since 1990, more than \$137 million in matching grants have been awarded for 734 capital preservation and planning projects throughout the state.

Two categories of grants are awarded through the program. **Historic Site Management Grants**, up to \$50,000, help support planning exercises that promote effective management at historic sites. **Capital Preservation Grants**, up to \$750,000, help support construction expenses related to the preservation, restoration, and rehabilitation of historic properties and associated architectural and engineering expenses.

In 2015, more than \$2.7 million was reimbursed for construction and planning activities. The following nine capital and 16 planning projects were successfully completed and closed out:

CAPITAL PRESERVATION GRANTS

NEW MILFORD PLANT OF THE HACKENSACK WATER WORKS, ORADELL, BERGEN COUNTY

A \$750,000 grant to Bergen County helped fund stabilization of the distinctive smoke stacks as well as site and safety improvements.



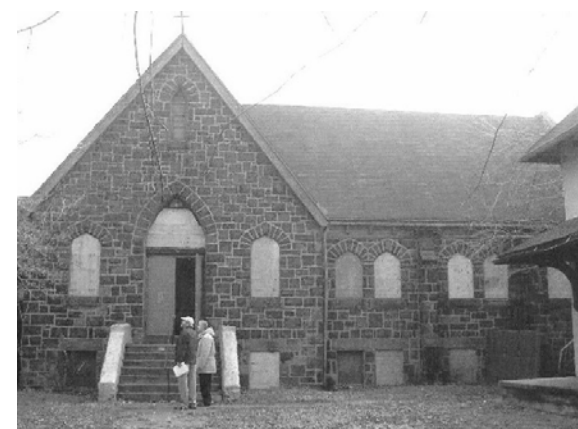
GRANT PROGRAMS: COMPLETED PROJECTS

GARDEN STATE HISTORIC PRESERVATION TRUST FUND

CAPITAL PRESERVATION GRANTS

CHURCH OF OUR SAVIOUR, CAMDEN, CAMDEN COUNTY (featured on cover)

A \$750,000 grant to the Camden Shipyard and Maritime Museum helped fund structural stabilization, exterior restoration, and interior rehabilitation of the former chapel and parish hall for use as a maritime museum and community space.



STANLEY THEATER, NEWARK, ESSEX COUNTY

A \$30,000 grant to the Newark Gospel Tabernacle helped fund exterior restoration, particularly repairs to the roof and skylight in this former 1927 movie theater.



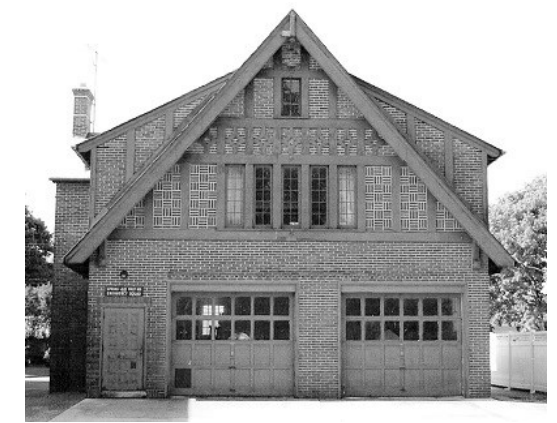
SAMUEL FLEMING HOUSE (FLEMING CASTLE), FLEMINGTON, HUNTERDON COUNTY

A \$49,650 grant to the borough helped fund structural repairs and clapboard siding restoration. Also known as Fleming Castle, this building was saved by the Daughters of the American Revolution in the 1920s.



FREDERIC A. DUGGAN FIRST AID AND EMERGENCY SQUAD BUILDING, SPRING LAKE, MONMOUTH COUNTY

A \$526,950 grant to Spring Lake Borough helped fund the restoration of the unused Tudor style building for a tourism and community center. The project included new construction that added accessibility, restrooms and additional office and meeting space.



GRANT PROGRAMS: COMPLETED PROJECTS

GARDEN STATE HISTORIC PRESERVATION TRUST FUND

CAPITAL PRESERVATION GRANTS

FOSTERFIELDS LIVING HISTORICAL FARM, MORRIS TOWNSHIP, MORRIS COUNTY

A \$659,400 grant to the Morris County Park Commission helped fund restoration of the main barn to its 1920s appearance. Fosterfields is the state's oldest living history museum, established in 1976.



MORRISTOWN LIBRARY, MORRISTOWN, MORRIS COUNTY

A 279,737 grant to the Morristown and Morris Township Library helped fund the masonry restoration of the Collegiate-Gothic style building, guided by a preservation plan and a masonry condition assessment.



SALEM COUNTY COURTHOUSE, SALEM, SALEM COUNTY

A \$250,000 grant to the county helped fund the exterior and interior restoration of the 1817 courthouse, along with accessibility improvements. The prominent Federal style building still functions as a courthouse.



PORT COLDEN METHODIST EPISCOPAL CHURCH, WASHINGTON TOWNSHIP, WARREN COUNTY

A \$186,000 grant helped fund the structural stabilization of the bell tower, the reattachment of the steeple, the restoration of the main entry, and the restoration of the exterior clapboard and shingle siding. The 1890s church is now painted in historically accurate colors.



HISTORIC SITE MANAGEMENT GRANTS

BURLINGTON COUNTY

Rancocas Lyceum, Westampton

A \$30,690 grant to the Westampton Historical Society helped fund the preparation of a preservation plan for this 1877 building that has served as lyceum, town hall, fire house and now community center.

CAMDEN COUNTY

St. Paul's Church, Camden

A \$49,669 grant to St. Paul's Church, Camden helped fund the development of a 15-year master plan and National Register nomination.

CUMBERLAND COUNTY

Bivalve Shipping Sheds & Wharves, Commercial Township

A \$50,000 grant to Bayshore Center at Bivalve Wharves helped fund the preparation of a variety of interpretive materials and a marketing campaign for the facility, which was part of the local oyster maritime industry.

Bridgeton City Hall, Bridgeton (pictured below)

A \$15,000 grant to the city helped fund a preservation plan that includes a conditions assessment and preservation recommendations for the structure, which is suffering from lack of heating and ventilation. A workshop brought together city stakeholders to discuss possible new uses and occupants for the 1932 building.



ESSEX COUNTY

Belleville Avenue Congregational Church, Newark

A \$41,074 grant to Clinton Memorial AME Zion Church helped fund a conditions assessment, made recommendations for future prioritized repairs and provide preservation guidelines for volunteer work on the building.

Grover Cleveland Birthplace, Caldwell

A \$49,500 grant to the Grover Cleveland Birthplace Association helped fund the preparation of a conditions assessment, feasibility study and construction plan for reusing the carriage house as a visitor center, as well as an archeological assessment and heritage tourism plan.

Israel Crane House, Montclair

\$28,500 grant to the Montclair Historical Society helped fund the preparation of a preservation plan and conceptual site planning for the site. The house was headquarters for the YWCA from 1920-1965 and is now a house museum.

Newark Symphony Hall, Newark

A \$50,000 grant to the Newark Performing Arts Corporation helped fund the preparation of a preservation plan that will help guide future efforts to maintain, repair and restore this 1920s urban landmark, with special attention to restoring its historic interior finishes.

HUDSON COUNTY

Ellis Island Recreation Building, Jersey City

A \$50,000 grant to Save Ellis Island, Inc. helped fund structural engineering and preservation studies that will guide future stabilization, repair and restoration. The New Jersey portion of the island contains a hospital complex where immigrants were detained for medical attention.



Pleasant Valley School at Howell Living History Farm, Hopewell Township, Mercer County

HUNTERDON COUNTY

Case/Dvoor Farmstead, Raritan Township

A \$45,000 grant to the Hunterdon Land Trust helped fund site planning including archaeology, landscape assessment, and development of schematic plans for site improvements. The farmstead interprets two centuries of agricultural history in the county.

MERCER COUNTY

Abbott Farm National Historic Landmark District, Hamilton Area

A \$46,875 grant to the Mercer County Park Commission helped fund the creation of a logo, branding strategy, and design standards to complement the opening of a new nature educational center in 2014. The site spans several municipalities and two counties, significant for history, natural history and archaeology.

Howell Living History Farm: Pleasant Valley School (pictured above), Joseph Phillips House, Titusville

A \$16,875 grant to the Friends of Howell Living History Farm helped fund the preparation of a fundraising strategy for work on the Pleasant Valley School and Joseph Phillips House, two recent acquisitions that contribute to the Pleasant Valley Historic District.

MERCER COUNTY

Louis I. Kahn Trenton Bathhouse and Day Camp, Ewing

An \$18,348 grant to the township helped fund a detailed maintenance manual for the campus, designed by Louis Kahn for the Jewish Community Center.

PASSAIC COUNTY

Downtown Commercial Historic District, Paterson

An \$18,000 grant to the city helped fund design guidelines that to encourage thoughtful renovations to the buildings of significance from 1850-1935.

SUSSEX COUNTY

Black Creek Site, Vernon Township

An \$18,750 grant to the Vernon Township Historical Society helped fund the preparation of an interpretive plan for the property, a Native American archaeological site that dates to 8,000 B.C.

UNION COUNTY

The Clearing, Summit

A \$35,100 grant to the Reeves-Reed Arboretum helped fund the preparation of a landscape master plan. Designed for Mr. and Mr. John Wisner of New York, the out design reflects the work of three different landscape firms.

GRANT PROGRAMS: COMPLETED PROJECTS

In 2014, The Department of Environmental Protection/State Historic Preservation Office partnered with the New Jersey Historic Trust to administer the Sandy Disaster Relief Grants for Historic Properties (SDRG). Approximately \$8 million in federal funding was provided by the U.S. Department of the Interior, National Park Service for Sandy-impacted properties that are either listed in the National Register of Historic Places or identified as eligible for this listing. Eligible applicants were properties owned by counties, municipalities, nonprofit organizations, houses of worship or places of public accommodation. All proposed repairs and restoration must comply with the *Secretary of the Interior's Standards for the Treatment of Historic Properties*.

Thirty seven sites were recommended for funding for a total of \$7,775,014. The following projects were completed and closed in 2015:

ATLANTIC COUNTY

Fire Station #8 (Now #2), Atlantic City

A \$205,649 grant helped fund cleaning and sanitization, garage door replacement and repairs to interior finishes at this active fire station.

Fire Station #9 (Now #3), Atlantic City

A \$338,289 grant helped fund a new roof and flashing, cleaning and sanitization and interior building repairs at this active fire station.

ESSEX COUNTY

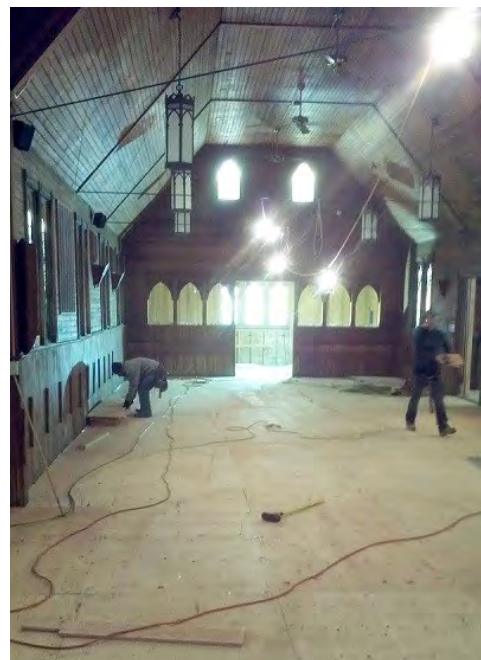
Newark Museum, Newark

A \$501,000 grant helped fund roof replacement and repairs to the parapet wall on the museum's main building.

OCEAN COUNTY

All Saints Episcopal Church, Bay Head

A \$151,000 grant helped fund repairs that were not covered under the property's insurance including red cedar shingle replacement, sheathing, floor and a new concrete slab and pilings.



The subfloor of All Saints Episcopal Church in Bay Head under construction (left) and the completed work (right) in June 2015.

SANDY DISASTER RELIEF GRANTS FOR HISTORIC PROPERTIES



Ocean City received \$501,000 for the comprehensive restoration and repair of the interior and exterior of the former railroad station, now the Ocean City Transportation Center. The photos show the condition of the waiting room after Sandy damage was stabilized (left) and the restoration of floors, wainscoting, doors and other interior features (right) in May 2015.



The Historic Preservation Office and the New Jersey Historic Trust hosted the Sandy Grant team from the National Park Service in July for a whirlwind three-day tour of sites funded by the Sandy Disaster Relief Grant program in New Jersey. Here the group visits the 1774 landmark Christ Church Episcopal of Shrewsbury, which received \$150,650 toward repairs to the clock, cupola and damaged grave markers.

GRANT PROGRAMS: AWARDED PROJECTS

For the fifth consecutive year, 1772 Foundation partnered with the New Jersey Historic Trust to offer Capital Preservation Grants up to \$15,000 to nonprofit organizations for exterior repair and restoration projects. The grants require a one-to-one match from the grant recipient, and are limited to certified 501(c) 3 organizations, excluding schools and religious congregations.

Since 2011, the Historic Trust has recommended grant awards totaling \$1.25 million for 114 projects, in partnership with the 1772 Foundation.

In 2015, the Historic Trust evaluated 51 applications requesting \$585,775 and recommended funding totaling \$290,549 to 29 applicants. The Historic Trust is pleased to announce that its ongoing partnership with the 1772 Foundation will continue into 2016.

The following grants were approved by the 1772 Foundation at its July 2015 meeting:

ATLANTIC COUNTY



Absecon Lighthouse, Atlantic City

A \$10,000 grant to the Inlet Public Private Association, Inc. will help fund painting the upper third of the tower and repair ironwork at the lantern room level of this 1855 lighthouse.



Former Town Hall, Hammonton

A \$4,462 grant to the Historical Society of Hammonton will help fund repairs and painting to windows and siding on this 1887 frame building that was moved to its current park setting in 2006.

BERGEN COUNTY



Erie Railroad Interlocking Tower "WC", Waldwick

A \$2,941 grant to the Waldwick Historical Society will help fund exterior painting and security system installation at the 1890 wood tower that remained in use until 1986.



Civil War Drill Hall and Armory, Leonia

A \$8,000 grant to the Players Guild of Leonia will help fund exterior painting of this 1859 drill hall that now hosts plays and performances.

1772 FOUNDATION

BURLINGTON COUNTY



Burlington Library Company, Burlington City

A \$4,250 grant to the Friends of Library Company of Burlington will help fund an assessment of the 1864 building's condition, code requirements and maintenance needs. The library has been in continuous operation since 1757.



Rancocas Lyceum, Westampton

A \$15,000 grant to the Westampton Township Historical Society will help fund the repair and painting of 18 original wood windows on this 1876 building that has been a lyceum, fire hall and now community center.



Friends Meeting House, Bordentown City

A \$15,000 grant to the Bordentown Historical Society, Inc. will help fund the restoration of the main elevation's brick and stucco to its historic appearance. The house hosts the society's historic collection and events.



White Hill Mansion, Fieldsboro

A \$4,500 grant to The Friends of White Hill Mansion will help fund repairs to the foundation of this Georgian-style home that also served as a popular local restaurant in the 20th century.



Paulsdale, Mount Laurel Township

A \$14,047 grant to the Alice Paul Institute will help fund porch and window repair at this National Historic Landmark, birthplace and childhood home of suffragist Alice Paul.



West Hill Manor House, Burlington Township

A \$4,000 grant to the Friends of West Hill, Inc. will help fund repairs to the foundation of this 1790s Federal-style house which was constructed as a country estate.

CAPE MAY COUNTY



Hanger #1, Rio Grande
A \$15,000 grant to the NASW Foundation will help fund the repair and painting of the lower hangar doors and repair finishes on the corner tower. The Naval Air Station Wildwood served as a training facility during WWII.



Historic Cold Spring Village, Lower Township
A \$15,000 grant to the Historic Cold Spring Village Foundation will help fund cedar roof replacement for three buildings. The village is a collection of 1789-1840 structures that have a living-history interpretation.



Memucan Hughes Colonial House, Cape May City
A \$1,655 grant to the Greater Cape May Historical Society will help fund roof, porch and window repairs to this c. 1730 two-bay house, one of the few remaining example of Federal style architecture in the community.

CUMBERLAND COUNTY



Cumberland Nail & Iron Works, Bridgeton
A \$15,000 grant to the Center for Historic American Building Arts will help fund the preparation of a structural condition analysis and report for this 1815 former office associated with Bridgeton's earliest large-scale industry.



GAR Jacob Shinn Post #6, Commercial Township
A \$3,000 grant to the Port Norris Historical Society will help fund repointing of the brick piers, replacement of rotted sills and clapboard and installation of a security system in the 1890 building, now headquarters for the society.

HUNTERDON COUNTY

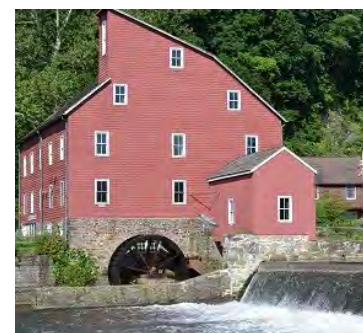


Case-Dvoor Farmstead, Raritan Township
A \$15,000 grant to the Hunterdon Land Trust will help fund painting of several outbuildings and masonry repairs. The farmstead represents more than two centuries of the agricultural industry.

HUNTERDON COUNTY



Christoffel Vought Farmstead, Clinton Township
A \$15,000 grant to the 1759 Vought House will help fund masonry repairs on two elevations. The house is significant for its German-influenced construction and association with a Loyalist family.



Hunt's Mill, Clinton
A \$3,800 grant to the Red Mill Museum Village will help fund the repointing of the raceway walls. The museum village contains buildings associated with the milling and quarry industries, and other historic buildings moved to the site.



James Marshall House, Lambertville
A \$15,000 grant to the Lambertville Historical Society will help fund painting and repairs to masonry, gutters, foundation, window and stair repairs. The house is associated with Marshall, who discovered gold in California in 1848.



The Kalmia Club, Lambertville
A \$10,400 grant to the Club will help fund the insulation of a synthetic slate roof for a more historically appropriate appearance. This 1890s vernacular Victorian residence has been the club's home since 1910.

MIDDLESEX COUNTY



Pulda Farm, North Brunswick
A \$7,500 grant to the North Brunswick Historical Society, Inc. will help fund exterior painting and restoration of the front porch, which had been enclosed. This is one of the last remaining farms in the township.

MONMOUTH COUNTY



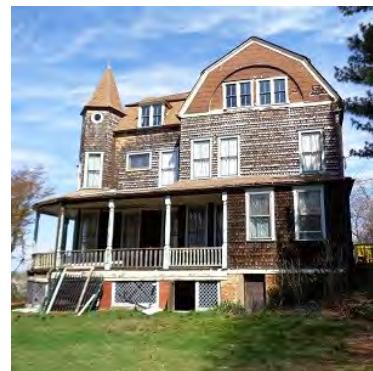
Covenhoven House, Freehold
A \$15,000 grant to the Monmouth County Historical Association will help fund cedar roof replacement on this mid-18th century building which is interpreted as a successful farmer's home.

MONMOUTH COUNTY



Parker Homestead, Little Silver

A \$4,971 grant to The Parker Homestead-1665, Inc. will help fund porch repairs on this early farmhouse that remained in the Parker family for three centuries.



Strauss Mansion, Atlantic Highlands

A \$14,850 grant to the Atlantic Highlands Historical Society will help fund window repair and restoration of this house built in 1893 as a summer retreat.

MORRIS COUNTY



Ayres/Knuth Farm, Denville Township

A \$15,000 grant will help fund roof and gutter repairs and replacement for the farmhouse, part of a 52-acre parcel purchased by the township for open space and preservation.

MORRIS COUNTY



Lake Hopatcong Train Station, Roxbury

A \$13,264 grant to the Lake Hopatcong Foundation will help fund masonry repair and repointing on this distinctive 1911 rail station that also served as a commercial building.

OCEAN COUNTY



Pierson-Sculthorp House, Toms River

A \$15,000 grant to the Ocean County Historical Society will help fund the replacement of vinyl windows with historically accurate wood windows. This 19th century house was saved when moved to its current site in 1972.

SUSSEX COUNTY



Lusscroft Farm - Main Barn, Wantage

A 15,000 grant to The Heritage and Agricultural Association, Inc. will help fund exterior painting of the substantial main barn, part of farm complex that was a scientific research center, now part of a state park.

“DISCOVER NJ HISTORY” LICENSE PLATE FUND FOR HERITAGE TOURISM

The Discover NJ History License Plate Fund provides grants (up to \$5,000) to develop and promote visitor-ready sites as heritage tourism destinations. The Fund was established at the recommendation of the 2010 Heritage Tourism Master Plan for New Jersey. Since 2012, 20 projects have been awarded grants totaling \$73,185.

COMPLETED PROJECT HIGHLIGHTS: INTERPRETIVE SIGNAGE

License Plate grants helped to fund different types of signage for three unique sites to guide and provide information to visitors, enhancing the tourism experience.

In Millstone Township, the local Friends group managed the design and installation of wayside signage to guide visitors on bicycles and in cars to the historic Baird Homestead. The placement of the signs coordinated with other historic sites in the region.

Signs in the Village of East Millstone Township marked the boundaries of the historic district, which is listed on the NJ and National Registers of Historic Places.



Interpretive signage at the Cape May Lighthouse provides information to visitors about many aspects of the light's history, environment and technical workings. The signs share a unifying design and provide a self-tour experience.



THE “DISCOVER NJ HISTORY” LICENSE PLATE FUND FOR HERITAGE TOURISM

Applications are accepted at any time throughout the fiscal year until the annual allocation has been exhausted. Grants are available to agencies or entities of state, county or municipal governments, and nonprofit organizations. The grants may be used to promote interpretation, to market links among heritage sites, to assess visitor-readiness of a heritage site or sites, to establish performance evaluation systems, and to provide training initiative workshops and educational activities that foster the goals and objectives of the NJ Heritage Tourism Master Plan.

“DISCOVER NJ HISTORY” LICENSE PLATE

The grant program is supported by income from sales and renewals of the “Discover NJ History” license plate. History supporters pay a one-time fee of \$50 and an annual renewal of \$10, all of which contribute to the fund. The more license plates that are sold, the greater the number of awards that will be made to help grow heritage tourism in New Jersey.

EASEMENT PROGRAM HIGHLIGHT



The New Jersey Historic Trust will accept a new preservation easement on a property in Cumberland County after its sale from the State of New Jersey to a private owner. The new and all future owners will be required to adhere to the terms of the easement and preserve the character of a group of seven historic buildings, which includes a farmhouse, outbuildings and cultural landscape features. The eleven-acre parcel is part of a 783-acre property purchased by DEP Office of Green Acres, the majority of which will be maintained as open space.

The Department of Treasury and the potential buyer are negotiating the final sale, and the easement will be recorded at the time of closing.



ISAIAH & MARY SHEPPARD FARM SITE FAIRFIELD TOWNSHIP, CUMBERLAND COUNTY



THE RESOURCE: SHEPPARD FARM SITE

The eleven-acre parcel contains a patterned brick house that dates to 1736 and includes three later additions. While the ten-bedroom interior has been substantially renovated, the exterior retains historic integrity, including its distinctive brick, wood windows and doors and gable roof with dormers and decorative chimneys. In addition to the main house, the property's historic core includes a tenant house, barn, corn crib, smokehouse, ice house and farm office. Sited on the Cohansy River, the property also contains a boat house, riverside dock and other non-historic buildings.

Cumberland County is a rural location. The isolated Sheppard property is surrounded by state-owned land administered by NJ Fish and Wildlife. A few miles away in Cedarville, Sheppard Farms is operated by three brothers who are descendants of the original Sheppard family that settled in the region.

THE PROCESS

The story of the preservation of the Sheppard Farmstead goes back to 2008 and includes the cooperative efforts of three departments of state government, required two auctions to receive a competitive bid and the New Jersey Legislature, which had to pass legislation to approve the sale. When the easement is executed at the time of sale, it becomes part of the property deed. It becomes the responsibility of the Historic Trust to inspect the property annually to ensure its maintenance and preservation, and give approval for any proposed work or changes to features that are covered by the written easement.

The mission of the New Jersey Historic Trust is to advance historic preservation in New Jersey for the benefit of future generations through education, stewardship and financial investment programs that save our heritage and strengthen our communities.

The Historic Trust seeks to achieve its mission by serving as:

- A leading voice for preservation at the state level.
- A catalyst for preservation and community revitalization activities.
- A full partner in state policy development.

The Trust also provides financial support, protection and technical assistance through its programs:

The **CORPORATE BUSINESS TAX (CBT) HISTORIC PRESERVATION FUND** provides an annual source of matching grants for historic preservation projects that is available to nonprofit organizations and municipal or county government entities. The amount of funding provided by the program, which launched in the 2016 fiscal year, is pending final resolution of each year's budget. The CBT Fund continues the work of the **Garden State Historic Preservation Trust Fund** (2000-2012) and the **Historic Preservation Bond Program** (1990-1997). Since 1990, more than \$137 million in matching grants has been awarded to worthy historic preservation projects throughout the state.

In partnership with the **1772 FOUNDATION**, the Historic Trust offers Capital Preservation Grants up to \$15,000 to nonprofit organizations for repair and restoration projects.

The **DISCOVER NJ HISTORIC LICENSE PLATE FUND FOR HERITAGE TOURISM** provides grants up to \$5,000 to develop and promote visitor-ready sites as heritage tourism destinations.



NEW JERSEY CULTURAL TRUST CAPITAL PRESERVATION GRANTS protect and improve historic properties that are used by organizations that have history or humanities programming. Grants may be used for stabilization, repair, restoration, adaptive use, and increased accessibility. Funding is offered on a schedule provided by the NJ Cultural Trust.

The Trust offers long-term, low-interest loans through the **HISTORIC PRESERVATION REVOLVING LOAN FUND**, which provides for the acquisition, preservation, rehabilitation, or restoration of historic properties.

An **EMERGENCY GRANT AND LOAN FUND** provides limited funds for critically needed work on endangered historic resources. Currently only loans are available.

The **PRESERVATION EASEMENT PROGRAM** ensures the preservation of privately-owned properties in perpetuity through the use of deed restrictions. The Trust initiated the first statewide program of this kind, which enables easement donors to take advantage of charitable deduction tax benefits.

The Trust accepts donations of real estate through **NEW JERSEY LEGACIES**. Property donors may realize significant income and estate tax benefits by their donations. Donated properties are resold by the Trust with protective easements to ensure their preservation.

- Abbott Farm National Historic Landmark District, Hamilton, Mercer County*
- Absecon Lighthouse, Atlantic City, Atlantic County*
- All Saints Episcopal Church, Bay Head, Ocean County*
- Ayres/Knuth Farm, Denville Township, Morris County*
- Baird Homestead, Millstone Township, Monmouth County*
- Belleville Avenue Congregational Church (Clinton Memorial AME Zion Church), Newark, Essex County*
- Bivalve Shipping Sheds & Wharves, Commercial Township, Cumberland County*
- Black Creek Site, Vernon Township, Sussex County*
- Bridgeton City Hall, Bridgeton, Cumberland County*
- Burlington Library Company, Burlington City, Burlington County*
- Cadwalader Park, Trenton, Mercer County*
- Cape May Lighthouse, Lower Township, Cape May County*
- Case-Dvoor Farmstead, Raritan Township, Hunterdon County*
- Christoffel Vought Farmstead, Clinton Township, Hunterdon County*
- Church of Our Saviour (Camden Shipyard and Maritime Museum), Camden, Camden County*
- Civil War Drill Hall and Armory, Leonia, Bergen County*
- The Clearing (Reeves-Reed Arboretum), Summit, Union County*
- Covenhoven House, Freehold, Monmouth County*
- Cumberland Nail & Iron Works, Bridgeton, Cumberland County*
- Darlington Schoolhouse, Mahwah, Bergen County*
- Downtown Commercial Historic District, Paterson, Passaic County*
- Erie Railroad Interlocking Tower "WC," Waldwick, Bergen County*
- Ellis Island Recreation Building, Jersey City, Hudson County*
- Fire Station #8 (Now #2), Atlantic City, Atlantic County*
- Fire Station #9 (Now #3), Atlantic City, Atlantic County*
- Former Town Hall, Hammonton, Atlantic County*
- Fosterfields Living Historical Farm, Morris Township, Morris County*
- Frederic A. Duggan First Aid and Emergency Squad Building, Spring Lake, Monmouth County*
- Friends Meeting House, Bordentown City, Burlington County*
- GAR Jacob Shinn Post #6, Commercial Township, Cumberland County*
- Grover Cleveland Birthplace, Caldwell, Essex County*
- Hanger #1, Lower Township, Cape May County*
- Historic Cold Spring Village, Lower Township, Cape May County*
- Howell Living History Farm: Pleasant Valley School, Joseph Phillips House, Hopewell Township, Mercer County*
- Hunt's Mill, Clinton, Hunterdon County*
- Isaiah and Mary Sheppard Farm Site, Fairfled Township, Cumberland County*
- Israel Crane House, Montclair, Essex County*
- James Marshall House, Lambertville, Hunterdon County*
- The Kalmia Club, Lambertville, Hunterdon County*
- Lake Hopatcong Train Station, Roxbury Township, Morris County*
- Louis I. Kahn Trenton Bathhouse and Day Camp, Ewing, Mercer County*
- Lusscroft Farm: Main Barn, Wantage, Sussex County*
- Memucan Hughes Colonial House, Cape May City, Cape May County*
- Morristown Library, Morristown, Morris County*
- New Milford Plant of the Hackensack Water Works, Oradell, Bergen County*
- Newark Museum, Newark, Essex County*
- Newark Symphony Hall, Newark, Essex County*
- Parker Homestead, Little Silver, Monmouth County*
- Paulsdale, Mount Laurel Township, Burlington County*
- Pierson-Sculthorp House, Toms River, Ocean County*
- Port Colden Methodist Episcopal Church, Washington Township, Warren County*
- Pulda Farm, North Brunswick, Middlesex County*
- Ramsaysburg Homestead, Knowlton, Warren County*
- Rancocas Lyceum, Westampton, Burlington County*
- St. Paul's Church, Camden, Camden County*
- Salem County Courthouse, Salem, Salem County*
- Samuel Fleming House (Fleming Castle), Flemington, Hunterdon County*
- Stanley Theater, Newark, Essex County*
- Strauss Mansion, Atlantic Highlands, Monmouth County*
- Red Mill Museum Village: Screen House, Clinton, Hunterdon County*
- Village of East Millstone Historic District, Franklin Township, Somerset County*
- West Hill Manor House, Burlington Township, Burlington County*
- White Hill Mansion, Fieldsboro, Burlington County*



2015 ANNUAL REPORT

Governor Chris Christie • Lt. Governor Kim Guadagno
Charles A. Richman, Commissioner, Department of Community Affairs

New Jersey Historic Trust
PO Box 457
Trenton, NJ 08625
(609) 984-0473
njht@dca.nj.gov