



Agenda Date: 5/31/17
Agenda Item: 2H

STATE OF NEW JERSEY
Board of Public Utilities
44 South Clinton Avenue, 3rd Floor, Suite 314
Post Office Box 350
Trenton, New Jersey 08625-0350
www.nj.gov/bpu/

ENERGY

IN THE MATTER OF THE PETITION OF ATLANTIC)
CITY ELECTRIC COMPANY FOR APPROVAL OF)
AMENDMENTS TO ITS TARIFF TO PROVIDE FOR AN)
INCREASE IN RATES AND CHARGES FOR ELECTRIC)
SERVICE PURSUANT TO N.J.S.A. 48:2-21.1 AND FOR)
APPROVAL OF A GRID RESILIENCY INITIATIVE AND)
COST RECOVERY RELATED THERETO; AND FOR)
OTHER APPROPRIATE RELIEF (2016)- PHASE II)

ORDER APPROVING
STIPULATION

DOCKET NO. ER16030252

Parties of Record:

Phillip J. Passanante, Esq., on behalf of Atlantic City Electric Company, Petitioner
Stefanie A. Brand, Esq., Director, New Jersey Division of Rate Counsel
Bradford M. Stern, Esq., on behalf of Unimin Corporation- Intervenor
Raghu Murthy, Esq., on behalf of the Environmental Defense Fund-Intervenor
Joseph Accardo, Jr., Esq., on behalf of Public Service Electric and Gas Company-Participant

BY THE BOARD:

The New Jersey Board of Public Utilities ("Board") is empowered to ensure that regulated public utilities provide safe, adequate and proper service to the citizens of New Jersey. N.J.S.A. 48:2-23. Pursuant to N.J.S.A. 48:2-13, the Board has been vested by the Legislature with the general supervision and regulation of and jurisdiction and control over all public utilities, "so far as may be necessary for the purpose of carrying out the provisions of [Title 48]." The courts of this State have held that the grant of power by the Legislature to the Board is to be read broadly, and that the provisions of the statute governing public utilities are to be construed liberally. See, e.g. In re Public Service Electric and Gas Company, 35 N.J. 358, 371 (1961); Township of Deptford v. Woodbury Terrace Sewerage Corp., 54 N.J. 418, 424 (1969); Bergen County v. Dep't of Public Utilities, 117 N.J. Super. 304 (App. Div. 1971). The Board is also vested with the authority, pursuant to N.J.S.A. 48:2-19, to investigate any public utility, and, pursuant to N.J.S.A. 48:2-16 and 48:2-40, to issue orders to public utilities.

On March 20, 2013, the Board issued an Order¹ ("March 2013 Order"), recognizing "that there remains a very real threat from future major storm events." The Board found that "it is critical to investigate prudent, cost efficient and effective opportunities to protect New Jersey's utility infrastructure against damage from future Major Storm Events." The Board invited the submission of proposals by the State's utilities upgrades designed to protect the State's utility infrastructure from future major storm events.

By petition dated March 22, 2016, Atlantic City Electric Company ("ACE" or "Company") filed a petition ("2016 Base Rate Case") for approval of an increase in base rates for electric service and the authority to implement a five-year capital investment/grid resiliency program ("PowerAhead Program") with a proposed investment level of \$176 million. The petition also requested approval of an associated cost recovery mechanism, which would allow the Company to recover the revenue requirement associated with the PowerAhead Program based upon actual plant in-service for six month periods.

On April 11, 2016, the 2016 Base Rate Case was transmitted to the Office of Administrative Law ("OAL"), and Administrative Law Judge ("ALJ") Irene Jones was assigned presiding judge. On April 28, 2016, Public Service Electric and Gas Company ("PSE&G") filed a Motion to Participate. On May 3, 2016, Unimin Corporation ("Unimin") filed a Motion to Intervene. By letter dated May 12, 2016, the Company indicated that it did not oppose the granting of either Motion. On May 16, 2016, the Environmental Defense Fund ("EDF") filed a Motion to Intervene, which was opposed by the Company in a letter dated May 27, 2016. An in-person Pre-Hearing Conference was convened by ALJ Jones on May 19, 2016. On July 14, 2016, ALJ Jones issued a pre-hearing order granting the Motions of PSE&G and Unimin, but did not act on the EDF Motion.

Two public hearings were held by the OAL in conjunction with the filed base rate case on June 30, 2016, one in the afternoon and one in the evening. The public hearings were attended by members of the public and local municipal officials.

On August 19, 2016, the Company, Board Staff ("Staff"), and the New Jersey Division of Rate Counsel ("Rate Counsel"), and Unimin reached a settlement ("2016 Base Rate Case Stipulation") on the Company's revenue requirement and associated base rate case issues. The 2016 Base Rate Case Stipulation contained a proposal that the PowerAhead Program, and related cost recovery mechanism, be reviewed in a Phase II of the proceeding. On August 19, 2016, the Board recalled the entire case from the OAL to consider the 2016 Base Rate Case Stipulation and to address issues related to the PowerAhead Program. By Order dated August 24, 2016 ("August 2016 Order"), the Board adopted the 2016 Base Rate Case Stipulation and directed that the issues related to the PowerAhead Program be considered in a Phase II review and be retained by the Board. The August 2016 Order designated Commissioner Upendra Chivukula as the presiding officer to rule on all motions and establish and modify all schedules.

¹ In re the Board's Establishment of a Generic Proceeding to Review Costs, Benefits and Reliability Impacts of Major Storm Event Mitigation Efforts, BPU Docket No. AX13030197 [Order dated March 20, 2013.]

In support of and as part of Phase II of the Petition, the Company filed the direct testimony of witnesses Michael J. Sullivan and Kevin McGowan.

On October 5, 2016, Commissioner Chivukula issued an Order granting the pending motion to intervene filed by EDF. Commissioner Chivukula issued a Prehearing Order dated October 18, 2016 setting forth a schedule for pre-filing of witness testimony, discovery, evidentiary hearings, and other matters.

STIPULATION²

Throughout the course of the proceeding, the parties engaged in extensive discovery and held several in-person and telephonic conferences. Following the review of discovery, testimony, and multiple settlement conferences ACE, Rate Counsel, Board Staff, and EDF (collectively, "Signatory Parties") executed a stipulation of settlement ("Stipulation") resolving all of the issues related to the PowerAhead Program.³ In pertinent part, the Stipulation provides the following:

1. The Signatory Parties agree that the PowerAhead Program will include an investment level of \$79 million recovered through the stipulated cost recovery mechanism described in the Stipulation. The projects are intended to improve the storm resiliency of, and restoration times for the Company's distribution infrastructure to benefit its customers. These projects and amounts are incremental to the Company's normal capital spending budget. The PowerAhead Program will be for a five-year period beginning on the effective date of the Board's Order authorizing the PowerAhead Program and cost recovery mechanism.
2. The Signatory Parties agree that the specific PowerAhead investment levels to be recovered through the stipulated cost recovery mechanism, as described in the Stipulation, shall be up to the amounts specified below for the following initiatives:

<u>Sub-Program</u>	<u>\$ Million</u>
Structural and Electrical Hardening	\$24
Selective Undergrounding	\$11
Barrier Island Feeder Ties	\$13
Distribution Automation	\$15
Electronic Fusing	\$2
New Substation – Harbor Beach	\$14
TOTAL	\$79

3. *Structural and Electrical Hardening.* ACE will invest up to a total of \$24 million in the Structural and Electrical Hardening Sub-program over the next five years following the issuance of a Board Order approving the Stipulation. This investment will be recoverable through the cost recovery mechanism established

² Although described at some length in this Order, should there be any conflict between this summary and the Settlement, the terms of the Settlement control, subject to the findings and conclusion in this Order.

³ Intervenor Unimin and participant PSE&G did not sign the stipulation and filed letters of no objection.

in the Stipulation. The twelve feeders where work will be performed under this sub-program are identified in Confidential Appendix One. The work to be performed in this subprogram includes: storm guying, replacement of wood cross-arms and braces, pole and conductor upgrades, and elevation of pad-mounted transformers and equipment in areas that are the most vulnerable to the effects of severe weather.

If ACE determines that it would be beneficial to adjust the feeders on which the work will be performed to a feeder with comparable characteristics as described by the selection criteria contained in Exhibit D of the Stipulation "Performance Metrics" or to alter significantly the scope of work to be done on those feeders, it will notify Staff and Rate Counsel of the proposed change via letter. In its letter to Staff and Rate Counsel, ACE will describe its proposed program amendments, including the reason for the changes as well as provide a written description of the proposed changes and the associated costs. Staff and Rate Counsel will have 20 business days within which to file comments and/or objections on the proposed project amendments. If no objection is made within the 20 business day period, then ACE may move forward with the amended identified work. ACE agrees that it will not commence work on any proposed project amendments until the collaborative process described in paragraph 3 of the Stipulation has concluded.

4. *Selective Undergrounding.* ACE will invest \$11 million in the Selective Undergrounding Sub-Program over the next five years following the issuance of a Board Order approving the Stipulation. This investment will be recoverable through the cost recovery mechanism established in the Stipulation. The work to be performed under this sub-program includes undergrounding of four feeders identified in Confidential Appendix One.
5. *Barrier Island Feeder Ties.* ACE will invest \$13 million in the Barrier Island Feeder Ties Sub-Program over the next five years following the issuance of a Board Order approving the Stipulation. This investment will be recoverable through the cost recovery mechanism established in the Stipulation. The work to be performed under this sub-program includes: creation of additional tie points to enable temporary restoration, upgrade and expansion of the distribution system to facilitate restoration, provision of redundant feeder capacity, and creation of mainland to barrier island ties to improve resiliency. Specific projects are identified in Confidential Appendix One.
6. *Distribution Automation.* ACE will invest \$15 million in the Distribution Automation Sub-Program over the next five years following the issuance of a Board Order approving the Stipulation. This investment will be recoverable through the cost recovery mechanism established in the Stipulation. The work to be performed under this sub-program includes: the rebuild and upgrade of approximately 15.5 miles of distribution feeder lines to increase feeder tie capability and storm resiliency (including the installation of voltage regulators), relay upgrades at three substations, installation of 71 reclosers (non-Automatic Sectionalizing and Restoration ("ASR")) to optimize feeder segmentation, and addition of communications/remote control capability to 90 standalone (non-ASR) reclosers. A Protective Coordination Study shall be completed before any

distribution automation work is started. Exhibit B and Confidential Appendix One of the Stipulation contains additional, detailed information regarding the specific work to be performed in this sub-program.

7. *Electronic Fusing.* ACE will invest \$2.0 million in the Electronic Fusing Sub-Program pilot program over the next five years following the issuance of a Board Order approving the Stipulation. This investment will be recoverable through the cost recovery mechanism established in the Stipulation. The work to be performed under this sub-program includes: the replacement of single operation fuses with reusable electronic fuses that are intended to automatically restore service. ACE shall provide a copy of its Protective Coordination Manual and Protocol for performing fault current and sectionalization studies to Staff and Rate Counsel before work is started on this Electronic Fusing Sub-Program.
8. *New Substation – Harbor Beach.* ACE will invest \$14 million in the design and construction of a new Harbor Beach Substation (to replace the existing substation) over the next five years following the issuance of a Board Order approving the Stipulation. This distribution system capital investment will be recoverable through the cost recovery mechanism established to, and does not include the related transmission system capital investment which will be required to extend energy supplies to the substation. Related transmission system capital investment will continue to be recovered in transmission rates. Exhibit C of the Stipulation contains additional, detailed information regarding the specific work to be performed in constructing the new Harbor Beach Substation.
9. If ACE makes a future filing to address Smart Grid issues including smart street lighting, Advanced Metering Infrastructure or other similar initiatives, ACE agrees to consult with EDF on that filing. ACE agrees to discuss with EDF issues including voltage optimization, integration of distributed energy resources and customer access to energy usage data, and to evaluate the costs and benefits of these initiatives.
10. The Signatory Parties recognize that the resiliency and storm hardening initiatives included in the PowerAhead program are significant in scale and scope, and that some flexibility in budgeting each sub-group of programs is appropriate. Accordingly, the Signatory Parties agree that ACE may make adjustments to Sub-Program budgets in the following manner: changes in the cumulative amount of 5% or less of any sub-program investment level may be made immediately by ACE, with notice to Board Staff and Rate Counsel of the changes within 30 days following the change. "Cumulative amount" in this paragraph shall mean cumulative for the entire period of the program. ACE shall not make changes exceeding 5% of any sub-program investment level without 20 business days prior written and electronic notification to Board Staff and Rate Counsel, including the reason for the changes as well as a written description of the proposed changes and the associated costs, providing Staff and Rate Counsel with the opportunity to object within that time period. If there is no written objection by Board Staff or Rate Counsel within 20 business days of receipt of the electronic notice, ACE may move forward with the change.

11. Beginning with the quarterly Reliability Improvement Plan ("RIP") meeting covering the results for the fourth quarter of 2017, and then semi-annually thereafter, ACE will discuss the status of the PowerAhead program with Board Staff and Rate Counsel during the regularly scheduled RIP meetings.
12. On a semi-annual basis, ACE shall provide a report to Staff and Rate Counsel detailing the following information for each sub-program of PowerAhead Programs:
 - estimated PowerAhead total quantity of work completed for each of the six sub-programs. If the work completed cannot be quantified, the major tasks completed, e.g., design phase, material procurement, permitting, phases of construction, etc. should be specified;
 - forecasted and actual PowerAhead costs (broken out by sub-program and cost category) for the reporting period and for the program-to-date;
 - estimated PowerAhead project completion date by program within each sub-program;
 - performance metrics reports; and
 - anticipated changes to the PowerAhead projects.

This reporting requirement will continue through the review of the prudence of the PowerAhead investments.

13. The Signatory Parties agree that ACE shall be permitted to recover up to \$79 million in PowerAhead Program investments as defined in Paragraphs three through eight of the Stipulation, plus associated Allowance for Funds Used During Construction ("AFUDC"), through the PowerAhead Rider as described in the Stipulation. The prudence of the execution of these programs will be reviewed in the Company's subsequent base rate proceedings, as appropriate, including a review to ensure that they are distribution, not transmission, investments. Nothing in the Stipulation will preclude any party from raising in the subsequent base rate case proceedings any objection that could have been raised in any change notice, or other filing or report made by the Company. If the cost of a particular sub-program exceeds the amount allowable under the PowerAhead program, the Signatory Parties agree that ACE may seek recovery of those additional costs, not subject to recovery in the PowerAhead cost recovery mechanism, in a subsequent base rate case.
14. Cost recovery for completed projects will occur on a semi-annual basis provided the plant-in-service additions during the semi-annual period are at least \$7.0 million, with schedules, procedures, and filings as detailed in subsequent paragraphs. Should recoverable plant-in-service additions not exceed \$7.0 million during the semi-annual period, then costs associated with those plant-in-service additions shall be included and recovered in the next semi-annual period through the cost recovery mechanism described in the Stipulation. ACE agrees to forego filing a request for cost recovery associated with the PowerAhead program until PowerAhead has been in effect for a period of one year. Costs to be recovered include the return on net plant in-service as of the end of the semi-annual reporting period. The rate of return shall be calculated based on the overall rate of return approved in ACE's most recent base rate case. AFUDC

included in plant-in-service additions will be calculated using a return on equity ("ROE") that is no higher than the ROE authorized in the Company's most recent base rate case. Net plant will be calculated as gross plant in-service less accumulated depreciation less applicable accumulated deferred income taxes. The revenue requirement will also include depreciation expense, income taxes, the associated interest synchronization adjustment, and the BPU and Rate Counsel assessments. Depreciation will be included in the revenue requirement at ACE's current Board-approved depreciation rates. The Company will begin to depreciate an asset once it is placed into service. Operations and Maintenance expenses associated with the PowerAhead Program will not be included in the semi-annual revenue requirement calculations and will not be subject to deferral. Exhibit A of the Stipulation contains a detailed explanation of how the PowerAhead revenue requirement shall be calculated, along with an illustrative calculation, and a schedule of filing dates and rate effective dates.

15. The rate design for the PowerAhead recovery mechanism will utilize the rate design methodology used to set base rate rates in Phase I of this proceeding. The Signatory Parties acknowledge that ACE may file a base rate proceeding during the term of the PowerAhead program and propose a rate design methodology that differs from the rate design methodology used to set base rates in Phase I of this proceeding. In the event an alternative rate design methodology is adopted in a future base rate proceeding during the term of the PowerAhead Program, then that rate design shall be utilized for the PowerAhead recovery mechanism.
16. The Signatory Parties agree, and ACE understands, that the review of the prudence of the execution of all projects undertaken in the PowerAhead program will be determined in the Company's future base rate cases. ACE agrees that the rate adjustments established in the semi-annual filings are provisional and subject to refund in the event the Board determines that such costs have been imprudently incurred under the PowerAhead Program. Upon completion of the base rate case review of the PowerAhead projects, the PowerAhead surcharge associated with those projects will be rolled into base distribution rates when new rates go into effect at the conclusion of the base rate case. The Signatory Parties further agree that the base rate case review of PowerAhead investment costs is not only to ensure that the actual costs incurred in completing the projects were prudent, but includes review to ensure the investments are distribution, not transmission, investments. ACE further agrees that it will file a base rate case no later than three years from the effective date of the Board Order approving the Stipulation and the PowerAhead Program.
17. Along with its semi-annual filing, the Company agrees to provide the information outlined in Exhibit D attached to the Stipulation. Board Staff and Rate Counsel will have the opportunity to request discovery on the information provided by ACE in its semi-annual PowerAhead filings.

DISCUSSION AND FINDINGS

In evaluating a proposed Stipulation, the Board must review the record, balance the interests of the ratepayers and the shareholders, and determine whether the settlement represents a reasonable disposition of the issues that will enable the Company to provide its customers in this State with safe, adequate and proper service at just and reasonable rates. In re Petition of Pub. Serv. Elec. & Gas, 304 N.J. Super. 247 (App. Div.), cert. denied, 152 N.J. 12 (1997). The March 20, 2013 Order found that it was appropriate to invite all regulated utilities to submit detailed proposals for infrastructure upgrades designed to protect the State's utility infrastructure from future Major Storm Events. The March 2013 Order required Staff to review the efficacy of the measures proposed by the utilities and examine the costs to be potentially incurred by the utilities in association with efforts to protect utility infrastructure from future Major Storm Events, as well as any potential benefits. After carefully considering the record in this proceeding and the terms of the Stipulation, the Board is persuaded that the current settlement satisfies these goals.

The Signatory Parties agree that the goal of the ACE PowerAhead Program is to improve the storm resiliency of, and restoration times for, the Company's distribution infrastructure to benefit its customers and that the scope of the PowerAhead Program is incremental in nature to ACE's existing capital expenditures. The Board is persuaded that the ACE PowerAhead Program, if successfully executed, can help protect ACE's infrastructure from future Major Storm Events. The program provides for reporting by the Company and oversight by Staff and Rate Counsel. Based on the Board's review of the petition and Stipulation, the Board is persuaded that the current proposal satisfies those goals as well as the directives contained in the March 2013 Order.

With respect to the stipulated cost recovery mechanism, the Board is persuaded that the mechanism proposed in the Stipulation allows the Company rate recovery for all expenditures related to facilities that have been placed in service, but on a provisional basis, subject to refund. These costs will be subject to review in the next base rate case which the Company has committed to filing within the next three years. The Board believes the cost recovery mechanism adopted in the Stipulation strikes an effective balance between giving the Company a reasonable opportunity to earn its allowed rate of return over the life of the investment while still protecting ratepayers from paying more than reasonably necessary. No rates will be charged to customers until the facilities for which the rates are being charged are in service. Furthermore, the Company will defer its first cost recovery request until one year of the program is completed.

Based on the Board's careful review and consideration of the record in this proceeding, the Board **HEREBY FINDS** the Stipulation to be reasonable and in accordance with the law and strikes an appropriate balance between the needs of customers and of the Company.

Accordingly, the Board **HEREBY ADOPTS** the Stipulation in its entirety, and **HEREBY INCORPORATES** its terms and conditions as though fully set forth herein.

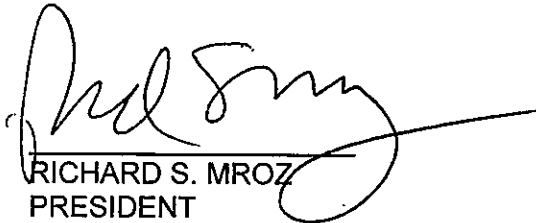
The Board **HEREBY RATIFIES** the decisions of Commissioner Chivukula rendered during the proceedings for the reasons stated in his Orders.

The Company's costs will remain subject to audit by the Board. This Decision and Order shall not preclude, nor prohibit, the Board from taking any actions determined to be appropriate as a result of any such audit.

This Order shall be effective on June 10, 2017.

DATED: 5/31/17

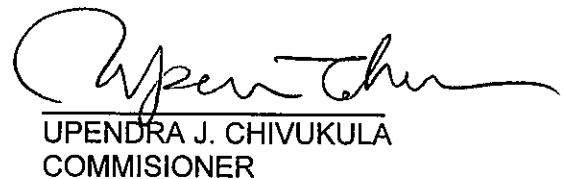
BOARD OF PUBLIC UTILITIES
BY:



RICHARD S. MROZ
PRESIDENT


JOSEPH E. FIORDALISO
COMMISSIONER

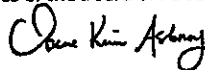

MARY-ANNA HOLDEN
COMMISSIONER


DIANNE SOLOMON
COMMISSIONER


UPENDRA J. CHIVUKULA
COMMISSIONER

ATTEST: 
IRENE KIM ASBURY
SECRETARY

I HEREBY CERTIFY that the within
document is a true copy of the original
in the files of the Board of Public Utilities



**IN THE MATTER OF THE PETITION OF FOR APPROVAL OF AMENDMENTS TO
ITS TARIFF TO PROVIDE FOR AN INCREASE IN RATES AND CHARGES FOR ELECTRIC
SERVICE PURSUANT STIPULATION OF SETTLEMENT TO N.J.S.A. 48:2-21 AND N.J.S.A.
48:2-21.1, FOR APPROVAL OF A GRID RESILIENCY INITIATIVE AND COST RECOVERY
RELATED THERETO, AND FOR OTHER APPROPRIATE RELIEF (2016)- PHASE II
DOCKET NO. ER16030252**

SERVICE LIST

Phillip J. Passanante, Esq.
Associate General Counsel
ACE – 92DC42
500 North Wakefield Drive
Post Office Box 6066
Newark, DE 19714-6066
Phillip.Passanante@pepcoholdings.com

Roger E. Pedersen
Manager, NJ Regulatory Affairs
External Issues and Compliance
ACE – 63ML38
5100 Harding Highway
Mays Landing, NJ 08330
Roger.Pedersen@pepcoholdings.com

Colien A. Foley, Esq.
Saul Ewing LLP
One Riverfront Plaza
Suite 1520
Newark, NJ 07102
cfoley@saul.com

Wendy E. Stark, Esq.
Deputy General Counsel
Pepco Holdings, Inc. – EP1132
701 Ninth Street, NW
Washington DC 20068-001
WESStark@pepcoholdings.com

Max Chang
Synapse Energy Economics, Inc.
485 Massachusetts Ave, Suite 2
Cambridge, MA 02139
mchang@synapse-energy.com

Division of Rate Counsel:
140 East Front Street, 4th Floor
Post Office Box 003
Trenton, NJ 08625-0003

Stefanie A. Brand, Esq., Director
sbrand@rpa.state.nj.us

Brian Lipman, Esq., Litigation Manager
blipman@rpa.state.nj.us

Ami Morita, Esq.
amorita@rpa.state.nj.us

Diane Schulze, Esq.
dschulze@rpa.state.nj.us

Christine Juarez, Esq.
cjuarez@rpa.state.nj.us

James Glassen, Esq.
iglassen@rpa.state.nj.us

Kurt Lewandowski, Esq.
klewandowski@rpa.state.nj.us

Board of Public Utilities:
44 South Clinton Avenue, 3rd Floor, Suite 314
Post Office Box 350
Trenton, NJ 08625-0350

Irene Kim Asbury, Esq.
Secretary of the Board
Irene.asbury@bpu.nj.gov

Gregory Booth
PowerServices, Inc.
1616 East Millbrook Road
Suite 210
Raleigh, NC 27609
gbooth@powerservices.com

PSE&G – Participant
PSE&G Services Corporation
80 Park Plaza, T5G
Newark, NJ 07102

Joseph Accardo, Esq.
Joseph.Accardo@pseg.com

Unimin – Intervenor
Brad Stern, Esq.
Law Office of Brad Stern
22 Lake View Hollow
Cherry Hill, NJ 08003
brad@bmsternlaw.com

Environmental Defense Fund – Intervenor
Raghu Murthy, Esq.
Senior Staff Attorney
Eastern Environmental Law Center
50 Park Place, Suite 1025
Newark, NJ 07102
rmurthy@easternenvironmental.org

Mary Barber, Director
Environmental Defense Fund
257 Park Avenue South
New York, NY 10010
mbarber@edf.org

John Finnigan, Esq.
Environmental Defense Fund
128 Winding Brook Lane
Terrace Park, OH 45174
jfinnigan@edf.org

Division of Energy
Thomas Walker, Director
Thomas.Walker@bpu.nj.gov

Stacy Peterson, Deputy Director
Stacy.Peterson@bpu.nj.gov

Robert Schultheis, Chief
Robert.Schultheis@bpu.nj.gov

Henry Rich
Henry.Rich@bpu.nj.gov

John Masiello
John.Masiello@bpu.nj.gov

Scott Sumliner
Scott.Sumliner@bpu.nj.gov

Executive Director
Paul Flanagan, Esq.
Paul.Flanagan@bpu.nj.gov

Chief Counsel's Office
Andrew McNally, Chief Counsel
Andrew.McNally@bpu.nj.gov

Bethany Rocque-Romaine, Esq.
Bethany.Romaine@bpu.nj.gov

Megan Lupo, Esq.
Megan.Lupo@bpu.nj.gov

Economist Office
Mark Beyer, Chief Economist
Mark.Beyer@bpu.nj.gov

Jackie O'Grady
Jackie.OGrady@bpu.nj.gov

Deputy Attorneys General:

Division of Law
124 Halsey Street
Post Office Box 45029
Newark, New Jersey 07101

Caroline Vachier, DAG
Caroline.vachier@dol.lps.state.nj.us

Alex Moreau, DAG
alex.moreau@dol.lps.state.nj.us

Geoffrey Gersten, DAG
geoffrey.gersten@lps.state.nj.us

Veronica Beke, DAG
Veronica.beke@dol.lps.state.nj.us

Corporation (“Unimin”) and the Environmental Defense Fund (“EDF”), and Participant, Public Service Electric and Gas Company (“PSE&G”). The New Jersey Board of Public Utilities shall be referred to in this Stipulation of Settlement (the “Stipulation”) as the “Board” or “BPU.” The settlement memorialized in this Stipulation regarding the Petitioner’s PowerAhead proposal shall sometimes be referred to herein as the “Settlement.”

PROCEDURAL HISTORY

Petitioner is a corporation organized and existing under the laws of the State of New Jersey, subject to the jurisdiction of the Board, with a regional office located at 5100 Harding Highway, Mays Landing, New Jersey 08330. On March 22, 2016, the Company filed a Verified Petition with the Board pursuant to N.J.S.A. 48:2-21 and N.J.A.C. 14:1-5.12 seeking an increase in the Company’s base rates for electric distribution service, approval of a storm resiliency and grid modernization initiative known as PowerAhead, approval of a cost-recovery mechanism related to PowerAhead, and to make other tariff changes. As described in the Company’s Verified Petition, PowerAhead was proposed as a five-year, \$176 million program focused on storm resiliency and hardening, grid modernization, and support of New Jersey’s Energy Master Plan through energy reduction and increased deployment of renewable energy resources.¹

The Board transmitted the matter to the Office of Administrative Law (“OAL”) as a contested case, and Administrative Law Judge (“ALJ”) Irene Jones was assigned to hear the case. On April 28, 2016, PSE&G filed a Motion to Participate. On May 3, 2016, Unimin filed a Motion to Intervene. By letter dated May 12, 2016, the Company indicated that it did not oppose the granting of either Motion. On May 16, 2016, the Environmental Defense Fund (“EDF”) filed

¹ The Company, on May 10, 2016, filed a First Amendment to the Verified Petition, revising its requested rate increase. This issue was resolved by settlement as the subject of an earlier order in this docketed matter.

a Motion to Intervene, which was opposed by the Company in a letter dated May 27, 2016. An in-person Pre-Hearing Conference was convened by ALJ Jones on May 19, 2016. ALJ Jones granted the Motions of PSE&G and Unimin, but did not act on the EDF Motion.²

After proper notice, two public hearings were held in Mays Landing, New Jersey at 3:30 P.M. and 5:30 P.M. on June 30, 2016, with ALJ John S. Kennedy and ALJ W. Todd Miller presiding, respectively. Several members of the public appeared at the hearings, and provided comments on the Company's proposed requests. All comments were transcribed and made a part of the record.

Ultimately, a settlement was reached regarding the Company's revenue requirement and certain related matters. The settlement also contained a proposal that the PowerAhead program, and related cost recovery mechanism, be reviewed in a Phase II of this proceeding. On August 19, 2016, the Board recalled the entire case from the OAL to consider the proposed Stipulation of Settlement³ and to address issues relating to PowerAhead.

On August 24, 2016, the Board issued an Order approving the proposed Stipulation of Settlement, directing that PowerAhead be considered in a Phase II of this proceeding, and designating Commissioner Upendra Chivukula as the presiding Commissioner for the Phase II proceeding. On October 5, 2016, Commissioner Chivukula issued an Order granting EDF's Motion to Intervene. An in-person pre-hearing conference was held on October 6, 2016, and a pre-hearing Order was issued on October 18, 2016.

Discovery was conducted and multiple settlement discussions were held. The Company, Board Staff, Rate Counsel, and EDF (collectively, the "Signatory Parties" and each a "Signatory Party") have come to an agreement on the matters set forth in this Stipulation.

² The ALJ's decisions were reflected in the corrected Pre-Hearing Order dated July 14, 2016.

³ The Stipulation of Settlement was filed with the Board on August 19, 2016. Board Staff, Rate Counsel and Unimin were parties to the Stipulation of Settlement. PSE&G indicated that it did not object to the settlement.

PSE&G and Unimin, while not Signatory Parties, have indicated that they do not object to the terms of this Stipulation. Therefore, the Signatory Parties hereto agree and stipulate as follows:

STIPULATED MATTERS

PowerAhead Program – Overall Investment Levels

1. The Signatory Parties agree that the PowerAhead program will include an investment level of \$79 million recovered through the stipulated cost recovery mechanism described below. The projects are intended to improve the storm resiliency of, and restoration times for, the Company's distribution infrastructure to benefit its customers. These projects and amounts are incremental to the Company's normal capital spending budget. The PowerAhead program will run over a five-year period beginning on the effective date of the Board's Order authorizing the PowerAhead program and cost recovery mechanism.

2. The Signatory Parties agree that the specific PowerAhead investment levels to be recovered through the stipulated cost recovery mechanism, as described more fully herein, shall be up to the amounts specified below for the following initiatives:

<u>Sub-Program</u>	<u>\$ Million</u>
Structural and Electrical Hardening	\$24
Selective Undergrounding	\$11
Barrier Island Feeder Ties	\$13
Distribution Automation	\$15
Electronic Fusing	\$2
New Substation – Harbor Beach	\$14
TOTAL	\$79

PowerAhead Program – Sub-Program Work Descriptions

3. Structural and Electrical Hardening. ACE will invest up to a total of \$24 million in the Structural and Electrical Hardening Sub-program over the next five years following the issuance of a Board Order approving this Settlement. This investment will be recoverable through the cost recovery mechanism established herein. The twelve feeders where work will be performed under this sub-program are identified in Confidential Appendix One.⁴ The work to be performed in this sub-program includes: storm guying, replacement of wood cross-arms and braces, pole and conductor upgrades, and elevation of pad-mounted transformers and equipment in areas that are the most vulnerable to the effects of severe weather.

If ACE determines that it would be beneficial to adjust the feeders on which the work will be performed to a feeder with comparable characteristics as described by the selection criteria contained in Exhibit D “Performance Metrics” or to alter significantly the scope of work to be done on those feeders, it will notify Staff and Rate Counsel of the proposed change via letter. In its letter⁵ to Staff and Rate Counsel, ACE will describe its proposed program amendments, including the reason for the changes as well as provide a written description of the proposed changes and the associated costs. Staff and Rate Counsel will have 20 business days within which to file comments and/or objections on the proposed project amendments. If no objection is made within the 20 business day period, then ACE may move forward with the amended identified work. ACE agrees that it will not commence work on any proposed project amendments until the collaborative process described in this paragraph has concluded.

⁴ The twelve feeders listed in Confidential Appendix One will comprise the complete list of distribution feeder work under this PowerAhead sub-program, to be completed over five years. These feeders were selected such that no more than one feeder would be worked on per substation. Additionally, no feeders on the Worst Performing Circuits list were selected.

⁵ Electronic and hard copies will be provided to Staff and Rate Counsel.

4. Selective Undergrounding. ACE will invest \$11 million in the Selective Undergrounding Sub-Program over the next five years following the issuance of a Board Order approving this Settlement. This investment will be recoverable through the cost recovery mechanism established herein. The work to be performed under this sub-program includes undergrounding of four feeders identified in Confidential Appendix One.

5. Barrier Island Feeder Ties. ACE will invest \$13 million in the Barrier Island Feeder Ties Sub-Program over the next five years following the issuance of a Board Order approving this Settlement. This investment will be recoverable through the cost recovery mechanism established herein. The work to be performed under this sub-program includes: creation of additional tie points to enable temporary restoration, upgrade and expansion of the distribution system to facilitate restoration, provision of redundant feeder capacity, and creation of mainland to barrier island ties to improve resiliency. Specific projects are identified in Confidential Appendix One.

6. Distribution Automation. ACE will invest \$15 million in the Distribution Automation Sub-Program over the next five years following the issuance of a Board Order approving this Settlement. This investment will be recoverable through the cost recovery mechanism established herein. The work to be performed under this sub-program includes: the rebuild and upgrade of approximately 15.5 miles of distribution feeder lines to increase feeder tie capability and storm resiliency (including the installation of voltage regulators), relay upgrades at three substations, installation of 71 reclosers (non-Automatic Sectionalizing and Restoration ("ASR")) to optimize feeder segmentation, and addition of communications/remote control capability to 90 standalone (non-ASR) reclosers. A Protective Coordination Study shall be completed before any distribution automation work is started. Exhibit B and Confidential

Appendix One hereto contain additional, detailed information regarding the specific work to be performed in this sub-program.

7. Electronic Fusing. ACE will invest \$2.0 million in the Electronic Fusing Sub-Program pilot program over the next five years following the issuance of a Board Order approving this Settlement. This investment will be recoverable through the cost recovery mechanism established herein. The work to be performed under this sub-program includes: the replacement of single operation fuses with reusable electronic fuses that are intended to automatically restore service. ACE shall provide a copy of its Protective Coordination Manual and Protocol for performing fault current and sectionalization studies to Staff and Rate Counsel before work is started on this Electronic Fusing Sub-Program.

8. New Substation – Harbor Beach. ACE will invest \$14 million in the design and construction of a new Harbor Beach Substation (to replace the existing substation) over the next five years following the issuance of a Board Order approving this Settlement. This distribution system capital investment will be recoverable through the cost recovery mechanism established herein, and does not include the related transmission system capital investment which will be required to extend energy supplies to the substation. Related transmission system capital investment will continue to be recovered in transmission rates. Exhibit C hereto contains additional, detailed information regarding the specific work to be performed in constructing the new Harbor Beach Substation.

9. If ACE makes a future filing to address Smart Grid issues including smart street lighting, Advanced Metering Infrastructure or other similar initiatives, ACE agrees to consult with EDF on that filing. ACE agrees to discuss with EDF issues including voltage optimization, integration of distributed energy resources and customer access to energy usage data, and to evaluate the costs and benefits of these initiatives.

10. The Signatory Parties recognize that the resiliency and storm hardening initiatives included in the PowerAhead program are significant in scale and scope, and that some flexibility in budgeting each sub-group of programs is appropriate. Accordingly, the Signatory Parties agree that ACE may make adjustments to Sub-Program budgets in the following manner: changes in the cumulative amount of 5% or less of any sub-program investment level may be made immediately by ACE, with notice to Board Staff and Rate Counsel of the changes within 30 days following the change. "Cumulative amount" in this paragraph shall mean cumulative for the entire period of the program. ACE shall not make changes exceeding 5% of any sub-program investment level without 20 business days prior written and electronic notification to Board Staff and Rate Counsel, including the reason for the changes as well as a written description of the proposed changes and the associated costs, providing Staff and Rate Counsel with the opportunity to object within that time period. If there is no written objection by Board Staff or Rate Counsel within 20 business days of receipt of the electronic notice, ACE may move forward with the change.

PowerAhead – Reporting Requirements

11. Beginning with the quarterly Reliability Improvement Plan ("RIP") meeting covering the results for the fourth quarter of 2017, and then semi-annually thereafter, ACE will discuss the status of the PowerAhead program with Board Staff and Rate Counsel during the regularly scheduled RIP meetings.

12. On a semi-annual basis, ACE shall provide a report to Staff and Rate Counsel detailing the following information for each sub-program of PowerAhead programs:

- estimated PowerAhead total quantity of work completed for each of the six sub-programs. If the work completed cannot be quantified, the major tasks completed, e.g., design phase, material procurement, permitting, phases of construction, etc. should be specified;

- forecasted and actual PowerAhead costs (broken out by sub-program and cost category) for the reporting period and for the program-to-date;
- estimated PowerAhead project completion date by program within each sub-program;
- performance metrics reports; and
- anticipated changes to the PowerAhead projects.

This reporting requirement will continue through the review of the prudence of the PowerAhead investments.

PowerAhead – Cost Recovery Mechanism

13. The Signatory Parties agree that ACE shall be permitted to recover up to \$79 million in PowerAhead program investments as defined in Paragraphs three through eight above, plus associated Allowance for Funds Used During Construction (“AFUDC”), through the PowerAhead Rider as described below. The prudence of the execution of these programs will be reviewed in the Company’s subsequent base rate proceedings, as appropriate, including a review to ensure that they are distribution, not transmission, investments. Nothing herein will preclude any party from raising in the subsequent base rate case proceedings any objection that could have been raised in any change notice, or other filing or report made by the Company. If the cost of a particular sub-program exceeds the amount allowable under the PowerAhead program, the Signatory Parties agree that ACE may seek recovery of those additional costs, not subject to recovery in the PowerAhead cost recovery mechanism, in a subsequent base rate case.

14. Cost recovery for completed projects will occur on a semi-annual basis provided the plant-in-service additions during the semi-annual period are at least \$7.0 million, with schedules, procedures, and filings as detailed in subsequent paragraphs. Should recoverable plant-in-service additions not exceed \$7.0 million during the semi-annual period, then costs

associated with those plant-in-service additions shall be included and recovered in the next semi-annual period through the cost recovery mechanism described herein. ACE agrees to forego filing a request for cost recovery associated with the PowerAhead program until PowerAhead has been in effect for a period of one year.⁶ Costs to be recovered include the return on net plant in-service as of the end of the semi-annual reporting period. The rate of return shall be calculated based on the overall rate of return approved in ACE's most recent base rate case. AFUDC included in plant-in-service additions will be calculated using a return on equity ("ROE") that is no higher than the ROE authorized in the Company's most recent base rate case. Net plant will be calculated as gross plant in-service less accumulated depreciation less applicable accumulated deferred income taxes. The revenue requirement will also include depreciation expense, income taxes, the associated interest synchronization adjustment, and the BPU and Rate Counsel assessments. Depreciation will be included in the revenue requirement at ACE's current Board-approved depreciation rates. The Company will begin to depreciate an asset once it is placed into service. Operations and Maintenance expenses associated with the PowerAhead program will not be included in the semi-annual revenue requirement calculations and will not be subject to deferral. Exhibit A contains a detailed explanation of how the PowerAhead revenue requirement shall be calculated, along with an illustrative calculation, and a schedule of filing dates and rate effective dates.

PowerAhead – Rate Design

15. The rate design for the PowerAhead recovery mechanism will utilize the rate design methodology used to set base rate rates in Phase I of this proceeding. The Signatory Parties acknowledge that ACE will file base rate proceedings during the term of the PowerAhead program and may propose a rate design methodology that differs from the rate design

⁶ A detailed list of filing dates reflecting this provision is included in Exhibit A, subsection C.

methodology used to set base rates in Phase I of this proceeding.⁷ In the event an alternative rate design methodology is adopted in a future base rate proceeding during the term of the PowerAhead program, then that rate design shall be utilized for the PowerAhead recovery mechanism.

PowerAhead - Program Review

16. The Signatory Parties agree, and ACE understands, that the review of the prudence of the execution of all projects undertaken in the PowerAhead program will be determined in the Company's future base rate cases. ACE agrees that the rate adjustments established in the semi-annual filings are provisional and subject to refund in the event the Board determines that such costs have been imprudently incurred under the PowerAhead program. Upon completion of the base rate case review of the PowerAhead projects, the PowerAhead surcharge associated with those projects will be rolled into base distribution rates when new rates go into effect at the conclusion of the base rate case. The Signatory Parties further agree that the base rate case review of PowerAhead investment costs is not only to ensure that the actual costs incurred in completing the projects were prudent, but includes review to ensure the investments are distribution, not transmission, investments. ACE further agrees that it will file a base rate case no later than three years from the effective date of the Board Order approving this Stipulation and the PowerAhead program.

17. Along with its semi-annual filing, the Company agrees to provide the information outlined in Exhibit D, attached hereto. Board Staff and Rate Counsel will have the opportunity to request discovery on the information provided by ACE in its semi-annual PowerAhead filings.

⁷ On March 30, 2017, ACE filed a request to increase base rates, which has been docketed as BPU Docket No. ER17030308.

Additional Provisions

18. Each Signatory Party agrees to use its best efforts to ensure that this Stipulation shall be presented to the Board for approval at the Board's May 31, 2017 public agenda meeting. Each Signatory Party understands that a Board Order adopting this Stipulation will become effective in accordance with N.J.S.A. 48:2-40.

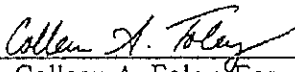
19. This Stipulation shall be binding on the Signatory Parties upon approval by the Board. This Stipulation shall bind the Signatory Parties in this matter only and shall have no precedential value. This Stipulation contains terms, each of which is interdependent with the others and essential in its own right to the signing of this Stipulation. Each term is vital to the agreement as a whole, since the Signatory Parties expressly and jointly state that they would not have signed the Stipulation had any term been modified in any way. Since the Signatory Parties have compromised in numerous areas, each is entitled to certain procedures in the event that any modifications whatsoever are made to the Stipulation. If, upon consideration of this Stipulation, the Board were to modify any of the terms described above, each Signatory Party must be given the right to be placed in the position it was in before this Stipulation was entered into. It is essential that each Signatory Party be afforded the option, prior to the implementation of any new rate resulting from any modification of this Stipulation, either to modify its own position to accept the proposed change(s) or to resume the proceeding as if no agreement had been reached. This proceeding, under such circumstances, would resume at the point where it was terminated. The Signatory Parties agree that these procedures are fair to all concerned, and therefore, they are made an integral and essential element of this Stipulation. None of the Signatory Parties shall be prohibited from or prejudiced in arguing a different policy or position before the Board in any other proceeding, as such agreements pertain only to this matter and to no other matter.

20. This Stipulation represents the full scope of the agreement between the Signatory Parties. This Stipulation may only be modified by a further written agreement executed by all of the Signatory Parties to this Stipulation.

21. This Stipulation may be executed in as many counterparts as there are Signatory Parties of this Stipulation, each of which counterparts shall be an original, but all of which shall constitute one and the same instrument.

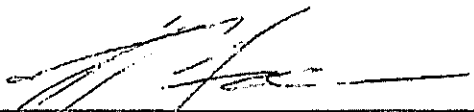
ATLANTIC CITY ELECTRIC COMPANY

May 3, 2017
Date

By: 
Colleen A. Foley, Esq.
Saul Ewing LLP
Attorney for Petitioner

CHRISTOPHER S. PORRINO
ATTORNEY GENERAL OF NEW JERSEY
Attorney for the Staff of the Board of Public Utilities

May 5, 2017
Date

By: 
Veronica Belk/Alex Moreau
Deputy Attorney General

STEFANIE A. BRAND, ESQ.
DIRECTOR – DIVISION OF RATE COUNSEL

Date

By: _____
Stefanie A. Brand, Esq.
Director, Division of Rate Counsel

ENVIRONMENTAL DEFENSE FUND

Date

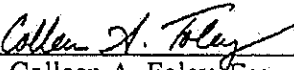
By: _____
Raghu Murthy, Esq.
Eastern Environmental Law Center
Attorney for the Environmental Defense Fund

20. This Stipulation represents the full scope of the agreement between the Signatory Parties. This Stipulation may only be modified by a further written agreement executed by all of the Signatory Parties to this Stipulation.

21. This Stipulation may be executed in as many counterparts as there are Signatory Parties of this Stipulation, each of which counterparts shall be an original, but all of which shall constitute one and the same instrument.

ATLANTIC CITY ELECTRIC COMPANY

May 3, 2017
Date

By: 
Colleen A. Foley, Esq.
Saul Ewing LLP
Attorney for Petitioner


CHRISTOPHER S. PORRINO
ATTORNEY GENERAL OF NEW JERSEY
Attorney for the Staff of the Board of Public Utilities

Date

By: _____
Veronica Beke/Alex Moreau
Deputy Attorney General

STEFANIE A. BRAND, ESQ.
DIRECTOR - DIVISION OF RATE COUNSEL

5/10/17
Date

By: 
Stefanie A. Brand, Esq.
Director, Division of Rate Counsel

ENVIRONMENTAL DEFENSE FUND

Date

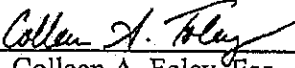
By: _____
Raghu Murthy, Esq.
Eastern Environmental Law Center
Attorney for the Environmental Defense Fund

20. This Stipulation represents the full scope of the agreement between the Signatory Parties. This Stipulation may only be modified by a further written agreement executed by all of the Signatory Parties to this Stipulation.

21. This Stipulation may be executed in as many counterparts as there are Signatory Parties of this Stipulation, each of which counterparts shall be an original, but all of which shall constitute one and the same instrument.

ATLANTIC CITY ELECTRIC COMPANY

May 3, 2017
Date

By: 
Colleen A. Foley, Esq.
Saul Ewing LLP
Attorney for Petitioner

CHRISTOPHER S. PORRINO
ATTORNEY GENERAL OF NEW JERSEY
Attorney for the Staff of the Board of Public Utilities

Date

By: _____
Veronica Beke/Alex Moreau
Deputy Attorney General

STEFANIE A. BRAND, ESQ.
DIRECTOR – DIVISION OF RATE COUNSEL

Date

By: _____
Stefanie A. Brand, Esq.
Director, Division of Rate Counsel

ENVIRONMENTAL DEFENSE FUND

5.5.17
Date

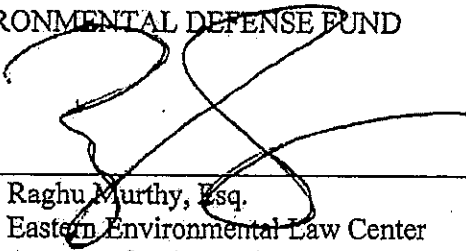
By: 
Raghu Murthy, Esq.
Eastern Environmental Law Center
Attorney for the Environmental Defense Fund

EXHIBIT A

PowerAhead Cost Recovery Mechanism Detailed Summary

- A. The PowerAhead cost recovery mechanism shall be calculated as summarized below.
- a. PowerAhead Investment Costs – All qualifying PowerAhead capital expenditures, including actual costs of engineering, design and construction, and property acquisitions, including actual labor, materials, overhead, and capitalized AFUDC associated with the projects (“PowerAhead Investment Costs”), will be recovered through base rate roll-ins for each of the time periods described below. The PowerAhead Investment Costs will be recorded, during construction, in an associated Construction Work In Progress (“CWIP”) account or in a Plant In-Service account upon the respective project being deemed used and useful. The Company will follow its current policies and practices with regard to capitalizing costs, including overheads.

Net Investment – Is equal to the PowerAhead Investment Costs related to projects that have been placed into service less the associated accumulated depreciation less applicable accumulated deferred income taxes.

Weighted Average Cost of Capital (“WACC”) – ACE agrees that the return on the incremental investments undertaken in the PowerAhead Program shall be at the Board-approved weighted average cost of capital as determined in the Company’s most recent base rate case (currently the WACC is 7.64% as determined in Phase I of this proceeding).⁸

The rate base roll-ins will be calculated using the following formula:

Revenue Requirement = ((PowerAhead Rate Base * After Tax WACC) + Depreciation Expense (net of tax) + Tax Adjustments)* Revenue Factor

- i. PowerAhead Rate Base – The PowerAhead Rate Base will be calculated as Plant In-Service, including CWIP transferred into service and associated AFUDC, less accumulated depreciation and less applicable accumulated deferred income taxes. AFUDC will be calculated using the same methodology used for current distribution assets consistent with the Company’s AFUDC policy, and as permitted by FERC Order 561, which includes compounding AFUDC on a semi-annual basis. The AFUDC rate will include the cost of equity approved in the Company’s most recent base rate case.

⁸ Should the Company file, and the Board decide, a base rate case during the five-year term of the PowerAhead program, then the existing amount of in-service PowerAhead projects being recovered in the surcharge would be rolled into base rates, on the effective date of the base rate decision, and the surcharge reset to zero. The next filing of the PowerAhead surcharge would reflect new projects placed in-service under the PowerAhead program, and the surcharge based on the return on common equity, the cost of long-term debt, and the rate design decided by the BPU in the Company’s most recently approved base rate case.

- ii. Depreciation Expense – Depreciation expense will be calculated as the PowerAhead Investment Costs by asset class multiplied by the associated depreciation rate applied to the same asset in current base rates and then calculated net of tax.
- iii. Tax Adjustments – Includes the effects of any flow through items and any tax law changes codified by the Internal Revenue Service, the State of New Jersey or any other taxing authority.
- iv. Revenue Factor – The Revenue Factor adjusts the Revenue Requirement Net of Tax for federal and state income taxes and the costs associated with the BPU and Rate Counsel Annual Assessments. The then-current statutory state and federal income tax rates and then-current BPU/Rate Counsel Assessment rates will be utilized.

B. A sample calculation is noted below:

PowerAhead Revenue Requirement Calculation Example

(1) Line No.	(2) <u>Item</u>		(3) <u>\$</u>
1	<u>Earnings</u>		
2	Book Depreciation Expense	2.44%	\$170,800
3			
4	State Tax Depreciation Expense - MACRS	3.75%	\$ 262,500
5	Federal Tax Depreciation Expense - Bonus	40.00%	\$ 2,800,000
6	Federal Tax Depreciation Expense - MACRS	3.75%	\$ 157,500
7			
8	Deferred State Income Tax		\$8,253
9	Deferred Federal Income Tax		\$972,456
10	State Income Tax		(\$23,625)
11	Federal Income Tax		(\$1,026,856)
12	Total Expense		<u>\$101,028</u>
13			
14	Allowance for Funds Used During Construction		\$10,000
15			
16	Earnings		<u>(\$91,028)</u>
17			
18	<u>Rate Base</u>		
19			
20	PowerAhead Plant Closings		\$7,000,000
21	Depreciation Reserve		\$170,800
22	Net Plant		<u>\$6,829,200</u>
23			
24			
25	Deferred State Income Tax		\$0 *
26	Deferred Federal Income Tax		(\$972,456) *
27			
28	Net Rate Base Adjustment		<u>\$5,856,744</u>
29			
30	<u>Revenue Requirement</u>		
31	After Tax Weighted Average Cost of Capital	7.64%	
32	Revenue Factor	1.6955	
33	Tax Adjustment (Interest Synchronization)		67,468
34	Revenue Requirement		<u>\$798,607</u>

* Based on forecasted Federal and New Jersey Net Operating Loss Carryforward positions

C. In order to implement the cost recovery mechanism for the PowerAhead Investments, ACE shall proceed on the schedule set out below following public notice and public comment hearing, recognizing that the prudence of the PowerAhead Investments will be determined in a future base rate proceeding as addressed herein. The schedule below anticipates semi-annual notice, public comment hearings, and rate adjustments to cover all rate changes for the PowerAhead investments: Please note that the dates below assume an April 21, 2017 Order of Approval by the Board, with an effective date of May 1, 2017 and are illustrative only. Actual filing dates will be based on the effective date of the Board's Order of Approval of the PowerAhead program.

a. First Roll-In Period. Revenue Requirements associated with program investments that are placed into service from May 1, 2017 through and including April 30, 2018 [1 year after the effective date of the BPU Order approving this Settlement] shall go into base rates effective July 30, 2018 [90 days after in-service date cut-off]. ACE shall make its initial filing for such rates by March 1, 2018 [60 days before cut-off date], and update such filing for actual data through April 30, 2018 by May 16, 2018.

b. Second Roll-In Period. Provided the \$7 million spending requirement is met during the six month period, Revenue Requirements associated with program investments that are placed into service from May 1, 2018 through and including October 31, 2018 shall go into base rates effective February 1, 2019. ACE shall make its initial filing for such rates by September 1, 2018, and update such filing for actual data through October 31, 2018 by November 16, 2018.

c. Third Roll-In Period. Provided the \$7 million spending requirement is met during the six month period, Revenue Requirements associated with program investments that are placed into service from November 1, 2018 through and including April 30, 2019 shall go into base rates effective August 1, 2019. ACE shall make its initial filing for such rates by March 1, 2019, and update such filing for actual data through April 30, 2019 by May 16, 2019.

d. The filing schedule set out above shall continue for the five-year term of the PowerAhead program. To the extent that any portion of the \$79 million authorized PowerAhead investment amount is not included in the roll-in schedule described above for the five year term of PowerAhead, then the unrecovered amount is eligible for recovery in ACE's next base rate.

EXHIBIT B

The following tables provide additional detail for the Distribution Automation Sub-Program. This information was originally provided in the Direct Testimony of Michael J. Sullivan, Attachment 1, pages 30-33.

Summary of Capital Cost & Estimated Timing of Work

Reconductoring	\$300	\$2,450	\$1,500	\$0	\$1,750	\$6,000
Substation Upgrades	\$200	\$1,300	\$1,500	\$0	\$0	\$3,000
DA Recloser Additions	\$0	\$250	\$900	\$1,650	\$1,700	\$4,500
Standalone Recloser Communications	\$730	\$0	\$0	\$350	\$420	\$1,500
Total	\$1,230	\$4,000	\$3,900	\$2,000	\$3,870	\$15,000

Reconductoring Work

Work to be completed involves 15.5 miles of feeders, impacting approximately 6,500 customers, and is identified more specifically in Confidential Appendix One.

Recloser Additions

Work to be performed includes 71 DA recloser additions, impacting approximately 47,300 customers, and is identified more specifically in Confidential Appendix One.

Communications Added to Standalone Reclosers

Work to be performed includes adding communications to 90 standalone reclosers, impacting approximately 45,000 customers.

All	Add communication and remote control capability to approximately 90 standalone reclosers	\$1,500	2017-2021	Remote visibility and control capability will result in quicker restoration of service to impacted customers. Operators know more precisely the location of the fault and can restore equipment remotely under conditions in which field crews cannot work (such as high winds).
TOTAL		\$1,500		

Substation Upgrades

Work to be completed involves upgrades to three substations bringing ASR functionality to 16 feeders, serving approximately 28,000 customers.

Winslow	Add DA functionality to Winslow substation	\$1,600	Complete in 2018	Winslow substation serves nearly 8,000 customers. DA expansion at Winslow would be expected to result in significant reliability improvements for these customers. In 2015, DA resulted in SAIFI improvements of 8.4% and SAIDI improvements of 6.9% for areas equipped with DA. Winslow is also a logical geographical location for DA because there is capability to tie to DA feeders served out of the surrounding substations. All of Williamstown substation's feeders are to be part of DA schemes in 2017, and Dacosta and Minotola substations' feeders are to be equipped with DA in 2018.
Pennsville	Add DA functionality to Churchtown substation	\$400	Complete in 2019	Churchtown substation currently serves 5,300 customers. There are plans to retire several older substations in the area and transfer the load to Churchtown, so the customer count will be doubling. DA expansion to Churchtown would be expected to result in significant reliability improvements for these customers. Customers served out of Woodstown substation would also see some benefit due to the creation of ties between the substations' feeders. (Woodstown is expected to gain DA capability in 2019). In 2015, DA resulted in SAIFI improvements of 8.4% and SAIDI improvements of 6.9% for areas equipped with DA.
Swedesboro	Add DA capability to Beckett substation	\$1,000	Complete in 2019	Beckett substation serves about 7,500 customers. Upgrading Beckett substation would enable future DA expansion to its seven feeders. The Beckett area is a logical place for DA expansion since the surrounding feeders served from Woodstown, Mantua, and High Street substations are to be given DA functionality in 2019.
TOTAL		\$3,000		

EXHIBIT C

The following discussion provides additional details regarding the new Harbor Beach Substation. This information was originally provided in the Direct Testimony of Michael J. Sullivan, Attachment 1, pages 42-44.⁹

Project Description: New Harbor Beach Substation

This project involves the construction of a new substation to replace the existing Harbor Beach substation to provide additional capacity to this island area. This work would be incremental to the Company's current Construction Plan and incorporates the following elements:

- Storm surge and flooding mitigation measures,
- High-wind and flying debris protection measures,
- Additional redundancy of supply to customers affected by past storm events, and
- Accommodations for distribution hardening and resiliency plans, as outlined in the following section of this report.

Hardening and Resiliency Measures Proposed:

1. Install new equipment above advisory base flood elevations (ABFE) 1 percent flood plain plus two feet,
2. Install new 69/12kV transformers to provide redundant supply to customers in case of transformer outages and provide additional capacity to tie over distribution load,
3. Install new 12kV switch gear to provide redundant supply to customers in case of distribution feeder outages, and
4. Install wind resistant masonry buildings as per FEMA standards for:
 - a. New 12kV switchgear,
 - b. New 69 kV Gas Insulated Switchgear,
 - c. Protective equipment, controls, and auxiliary equipment, and
 - d. Main Transformers.

Additional Details:

The proposed building and new equipment will be installed to the new elevation of ABFE 1 percent plus two feet, providing further protection from flooding waters. This project will also

⁹ Please note that the diagram of the proposed Harbor Beach Substation included below is a revised version of the diagram included in Mr. Sullivan's Direct Testimony.

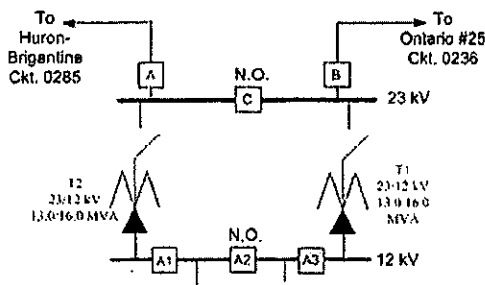
provide protection from flying material due to the installation of a new concrete enclosed building. The building will be of compartmentalized construction and contain the 69 kV Gas Insulated Switchgear, 69/12kV transformers, 12 kV switchgear, auxiliary equipment, relay protection and controls.

Due to the geographic location of Brigantine on a barrier island, there is no capacity to transfer 12 kV distribution load to alternate mainland substations and limited transformer capacity for transfers between the existing substations. As such, substantial load is at risk should the existing equipment experience a failure. This project would also meet the criteria for feeder firming, allowing a backup transfer of power should any single feeder fail, which is presently not available for every feeder.

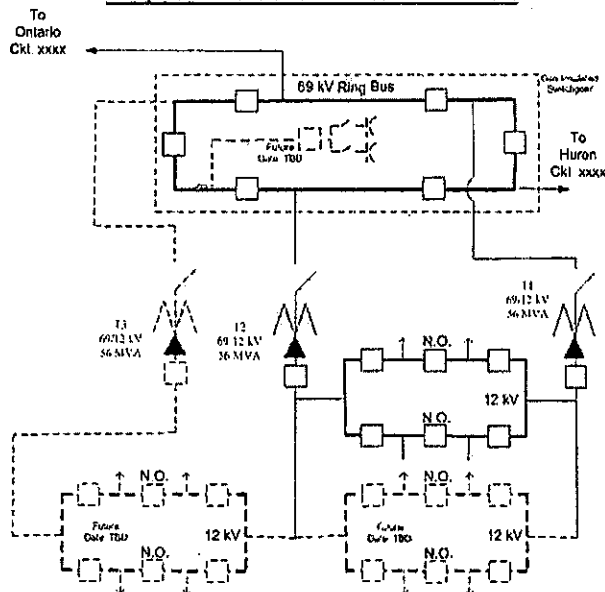
This project scope consolidates two substations and reconfigures the existing distribution feeder system to allow load transfer should there be a failure. Two new 69/12 kV, 40 MVA transformers will be installed as part of this project to provide complete firm capacity should an installed transformer fail. Also within the project scope is the installation of new sources of supply. Two new 69 kV sources of supply will have to be installed to support the new Harbor Beach substation. The 69 kV sources of supply will be from the Huron and Ontario substations. The installation of the new 69 kV sources from the mainland, together with the feeder reconfigurations is expected to reduce the customer outage minutes experienced within the area.

A new 69 kV line terminal position will be created on the Huron 69 kV ring bus. The position will be complete with bus work, breaker, line disconnect switches, voltage transformers and required protective relays. Similarly, at the Ontario substation a new 69 kV line terminal position will be created. New communication pathways to the Harbor Beach substation for protective relaying will be created and installed as part of this project. The proposed transmission portion of this project is not included in this submittal.

Existing Harbor Beach Substation



Proposed Harbor Beach Substation



The replacement substation at Harbor Beach is proposed to be constructed utilizing temporary switchgear that will be located in an adjacent parking lot due to site space restrictions. This will allow demolition of the existing substation equipment and construction of the new 69/12 kV substation within the existing property limits. The temporary switchgear will be removed from the parking lot, which will be restored at the completion of construction. The smaller Brigantine substation and its distribution load will be reconfigured and ultimately served by the new Harbor Beach substation. The existing Brigantine substation will then be demolished, providing a location for a future substation on the island of Brigantine if required at a later date.

EXHIBIT D

Minimum Filing Requirements

- 1) ACE's income statement for the most recent 12 month period, as filed with the Board.
- 2) ACE's balance sheet for the most recent 12 month period, as filed with the Board.
- 3) ACE's capital spending for each of the past five years, broken down by major category (e.g., customer driven, reliability, load and general plant).
- 4) ACE's overall approved PowerAhead capital budget broken down by major categories, both budgeted and actual amounts.
- 5) For each PowerAhead sub-program:
 - a. The original project summary for each sub-program;
 - b. Expenditures incurred to date; and
 - c. Appropriate metric (e.g., relays installed).
- 6) Anticipated sub-program timeline with updates and expected changes.
- 7) A calculation of the proposed rate adjustment based on details related to PowerAhead projects included in Plant in Service.
- 8) A calculation of the associated depreciation expense, based on those projects closed to Plant in Service during the period.
- 9) A list of any and all funds or credits received from the United States government, the State of New Jersey, a county or a municipality, for work related to any of the PowerAhead Program projects, such as relocation, reimbursement, or stimulus money.
 - a. An explanation of the financial treatment associated with the receipt of the government funds or credits.
- 10) A revenue requirement calculation showing the actual capital expenditures for the period for which the filing is made, as well as supporting calculations.

With each semi-annual filing, ACE will provide for each PowerAhead sub-program:

- the estimated quantity of work and the quantity completed to date or, if the project cannot be quantified, the major tasks completed, e.g., design phase, material procurement, permit gathering, phases of construction, etc.;
- the forecasted and actual PowerAhead costs for each sub-program to date for the semi-annual reporting period and for the program-to-date;

- the estimated PowerAhead project completion date for each sub-group program.

The project expenditures shall be broken out between material and other costs. This reporting will begin two months after the end of the first full calendar six months following the issuance of a written Board Order authorizing the PowerAhead Program and continue through the PowerAhead Program construction phase and prudence review.

Performance Metrics. For the PowerAhead program, ACE will report to Board Staff and Rate Counsel, on a semi-annual basis and after any Major Event, severe weather event performance at the feeder level, the operating level and system wide, measured against a performance baseline that reflects severe weather event conditions for the prior five years, on a rolling basis, for the applicable operating area and system wide. Feeder level or device level data, as appropriate, will be provided for feeders in which PowerAhead investments were made under the Distribution Automation and Electronic Fusing Sub-programs as detailed herein. Additionally, ACE will provide Staff and Rate Counsel with copies of its quarterly reports filed pursuant to the Board's February 20, 2013 Order in BPU Docket No. EO12070650, as codified at N.J.A.C. 14:5-8.7, regarding non-storm ("blue sky") performance. This material will be provided to Board Staff and Rate Counsel beginning in January 2018 and continue through the construction phase of the PowerAhead Program and prudence review.

ACE shall provide a baseline analysis detailing the selection criteria of feeders for the PowerAhead program based on major event reliability metrics. The analysis should also include justification why the chosen feeders are incremental to the Company's existing reliability improvement programs and base reliability spending.

The reporting requirements and metrics set forth herein will allow the Board to review the performance of the investments:

Structural and Electrical Hardening: Storm Circuit CMI and CAIDI will be measured against a baseline that reflects average CMI and CAIDI performance under Major Event conditions for the 5 years prior to the project completion date for the impacted feeders associated with the Structural and Electrical Hardening investments. A Major Event shall be defined as a sustained interruption of electric service resulting from severe weather events which affect at least 10 percent of the customers in an operating area or system wide. ACE will compare Storm Circuit CMI and CAIDI performance of feeders where Structural and Electrical Hardening investments are completed to the 5 year average baseline CMI and CAIDI values under Major Event conditions.

Barrier Island Feeder Ties: Storm Circuit CMI and CAIDI will be measured against a baseline that reflects average CMI and CAIDI performance under Major Event conditions for the 5 years prior to the project completion date for the impacted feeders associated with the Barrier Island Feeder Ties investments. A Major Event shall be defined as a sustained interruption of electric service resulting from severe weather events which affect at least 10 percent of the customers in an operating area or system wide. ACE will compare Storm Circuit CMI and CAIDI performance of feeders where Barrier Island Feeder Ties investments are completed to the 5 year average baseline CMI and CAIDI values under Major Event conditions.

Harbor Beach Substation: Post construction, Storm Circuit Customer Minutes of Interruption (CMI) and Customer Average Interruption Duration Index (CAIDI) will be measured against a baseline that reflects the average CMI and CAIDI performance under Major Event conditions for the 5 years prior to the project completion date for the applicable group of impacted feeders associated with the Harbor Beach substation investment. A Major Event shall be defined as a sustained interruption of electric service resulting from severe weather events which affect at least 10 percent of the customers in an operating area or system wide. ACE will compare aggregated Storm Circuit CMI and CAIDI performance of feeders affected by the Harbor Beach substation investments against the 5 year average baseline CMI and CAIDI values.

Distribution Automation: Storm Circuit CMI and CAIDI will be measured against a baseline that reflects average CMI and CAIDI performance under Major Event conditions for the 5 years prior to the project completion date for the impacted feeders associated with the Distribution Automation investments. A Major Event shall be defined as a sustained interruption of electric service resulting from severe weather events which affect at least 10 percent of the customers in an operating area or system wide. ACE will compare Storm Circuit CMI and CAIDI performance of feeders where Distribution Automation investments are completed to the 5 year average baseline CMI and CAIDI values under Major Event conditions.

Electronic Fusing: Storm device level CMI and circuit level CAIDI will be measured against a baseline that reflects average device level CMI and circuit level CAIDI performance under Major Event conditions for the 5 years prior to the project completion date for impacted devices replaced with the Electronic Fusing investments. A Major Event shall be defined as a sustained interruption of electric service resulting from severe weather events which affect at least 10 percent of the customers in an operating area or system wide. ACE will compare Storm device level CMI and circuit level CAIDI performance of feeders where Electronic Fusing investments are completed to the 5 year average baseline CMI and CAIDI values under Major Event conditions.

Selective Undergrounding: Storm feeder CMI and CAIDI will be measured against a baseline that reflects average CMI and CAIDI performance under Major Event conditions for the prior 5 years for the applicable feeders associated with the Selective Undergrounding Feeders investments. A Major Event shall be defined as a sustained interruption of electric service resulting from severe weather events which affect at least 10 percent of the customers in an operating area or system wide. ACE will compare Storm Circuit CMI and CAIDI performance of feeders where Selective Undergrounding investments are completed to the 5 year average baseline CMI and CAIDI values under Major Event conditions.

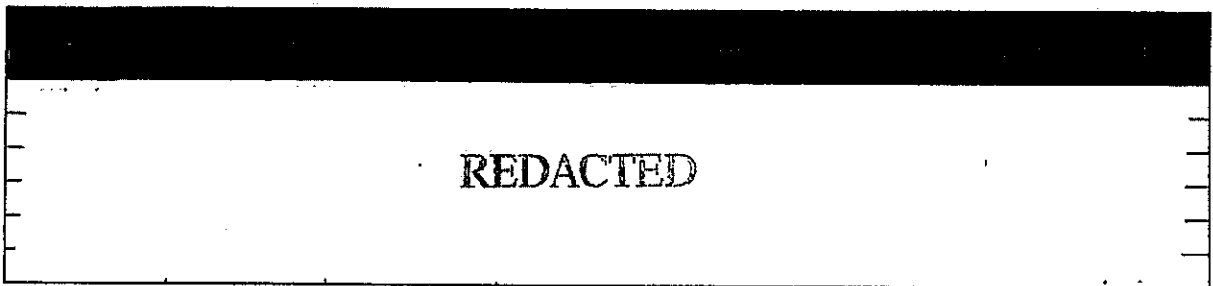
These metrics shall be reported semi-annually. This reporting will begin two months after the end of the first full calendar six months following the issuance of a written Board Order authorizing the PowerAhead Program and continue through the construction phase of the PowerAhead Program and prudency review.

Confidential Appendix One

Please note that the following information is considered confidential, should not be distributed or disseminated, and is the subject of a request to the Board of Public Utilities for confidential treatment.

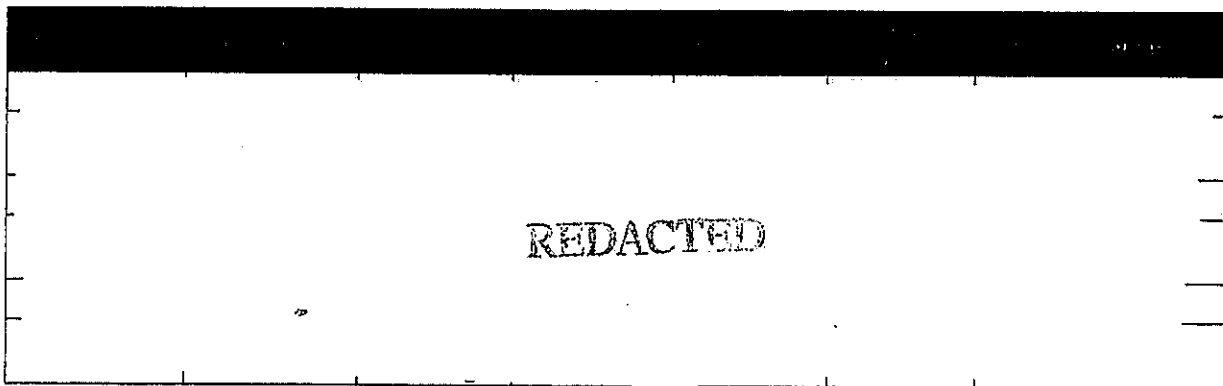
Structural and Electrical Hardening: Under this sub-program, work will be performed on the following feeders:

Table One-Originally Identified Feeders



A rectangular table with a black header bar at the top. The main body of the table is white and contains the word "REDACTED" in the center. There are small tick marks along the left and right vertical borders of the table.

Table Two-Supplemental Feeder List



A rectangular table with a black header bar at the top. The main body of the table is white and contains the word "REDACTED" in the center. There are small tick marks along the left and right vertical borders of the table.

Selective Undergrounding: The work to be performed under this sub-program includes undergrounding feeders located

REDACTED

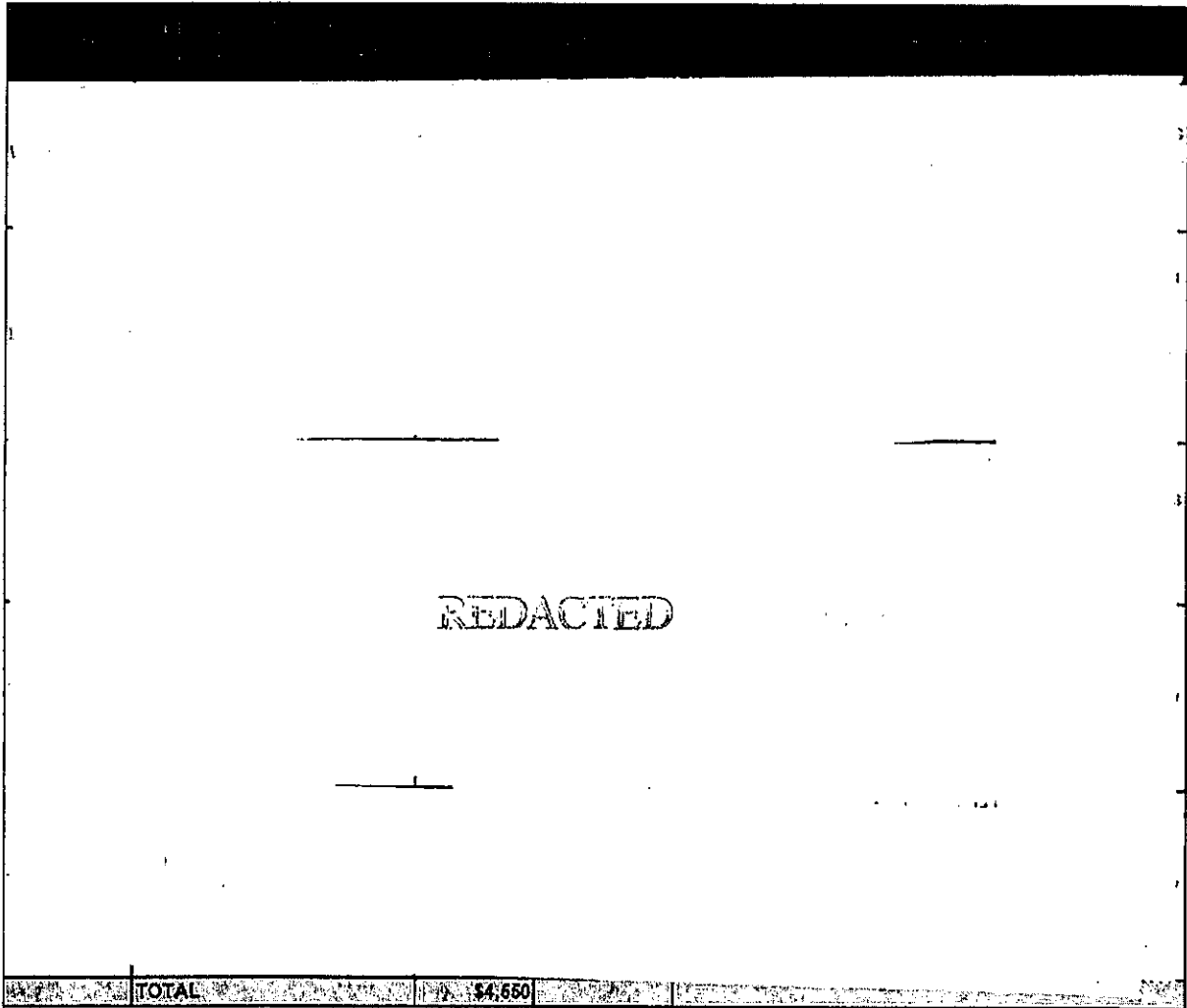
Barrier Island Feeder Ties: The specific projects included in this sub-program are identified in Table Three below.¹⁰

Table Three-Barrier Island Feeder Ties

REDACTED	
TOTAL	\$13,000

¹⁰ Table Three was provided in the Direct Testimony of Michael J. Sullivan, Attachment 1, page 25, Table 7.

71 Recloser Additions listed below:



REDACTED

TOTAL	\$4,650
-------	---------