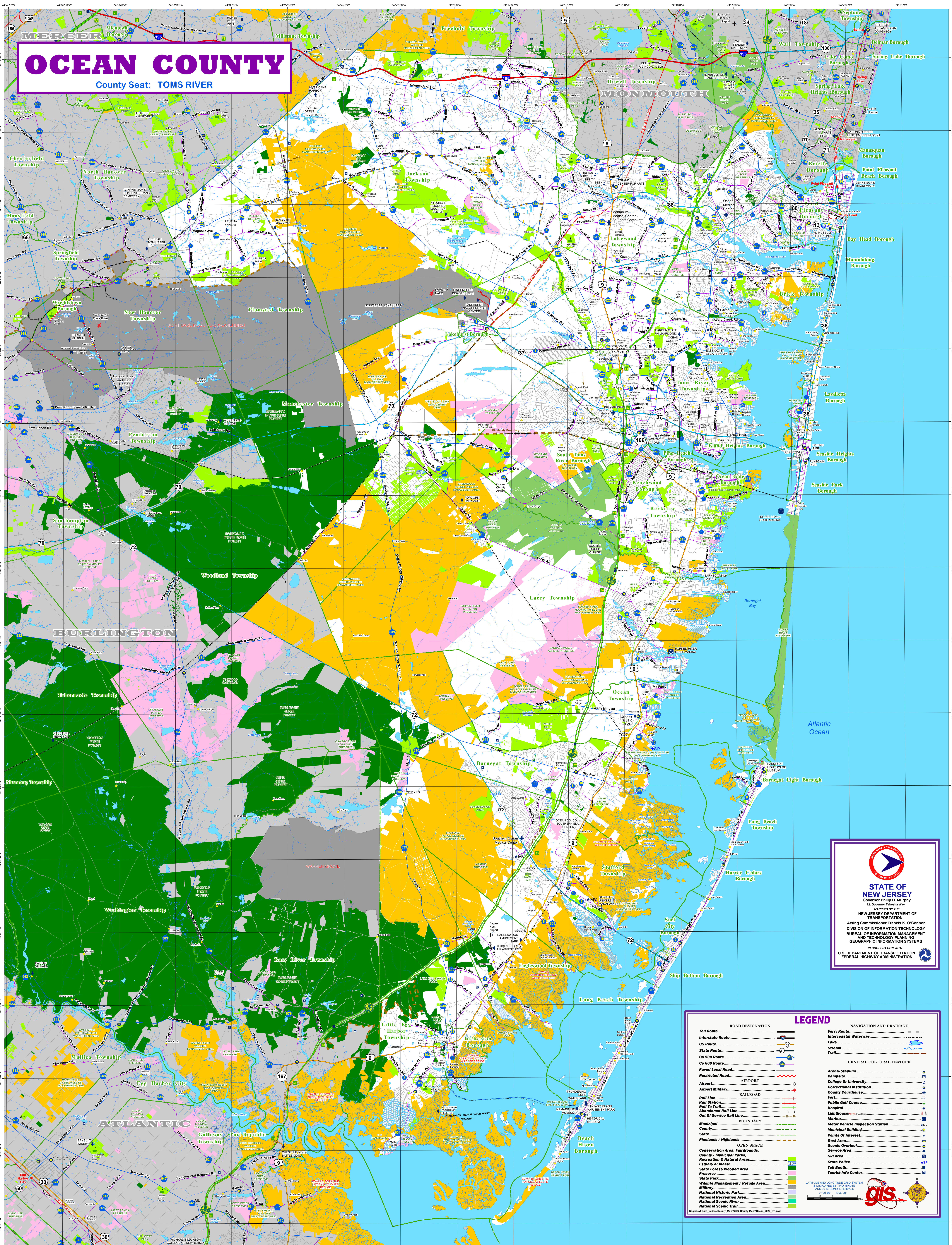


OCEAN COUNTY

County Seat: TOMS RIVER



STATE OF NEW JERSEY
 Governor Philip D. Murphy
 Lt. Governor Tashia Way
 NEW JERSEY DEPARTMENT OF TRANSPORTATION
 Acting Commissioner Francis K. O'Connor
 DIVISION OF INFORMATION TECHNOLOGY
 BUREAU OF INFORMATION MANAGEMENT
 AND TECHNOLOGY PLANNING
 GEOGRAPHIC INFORMATION SYSTEMS
 IN COOPERATION WITH
 U.S. DEPARTMENT OF TRANSPORTATION
 FEDERAL HIGHWAY ADMINISTRATION

LEGEND

<p>ROAD DESIGNATION</p> <ul style="list-style-type: none"> Toll Route Interstate Route US Route State Route Co 500 Route Co 600 Route Paired Local Road Restricted Road Airports Airport Military Rail Line Rail Station Rail To Trail Abandoned Rail Line Out Of Service Rail Line Municipal County State Pine Lands / Highlands OPEN SPACE Conservation Area, Fairgrounds, Recreation & Natural Areas Estuary or Marsh State Forest/Wooded Area Preserve State Park White Management / Refugio Area Military National Historic Park National Recreation Area National Scenic River National Scenic Trail 	<p>NAVIGATION AND DRAINAGE</p> <ul style="list-style-type: none"> Ferry Route Intercoastal Waterway Lake Stream Trail <p>GENERAL CULTURAL FEATURE</p> <ul style="list-style-type: none"> Arena/Stadium Campus College Or University Correctional Institution County Courthouse Fort Public Golf Course Hospital Lighthouse Marine Motor Vehicle Inspection Station Municipal Building Points Of Interest Rest Area Scenic Overlook Service Area Std Area State Police Toll Booth Tourist Info Center
--	---

LATITUDE AND LONGITUDE GRID SYSTEM
 IS DISPLAYED BY TWO MINUTE
 AND 30 SECOND INTERVALS
 12 30' 00" 45' 30"